

ML485USB

USB to RS-485 2-Wire Mini-Converter

Specifications

Serial Technology

RS-485 2-Wire	Data A(-), Data B(+), Ground
Connector	Removable Terminal Block (28 to 16 AWG)
Data Rate	Up to 921.6 Kbps

USB Technology

Connector	USB Type B Female (High Retention)
Standard	2.0 (Backward Compatible)
Data Rate	12 Mbps

Power

Source	USB Port
Input Voltage	5 VDC
Consumption	~ 0.5 W (Low power device, draws less than 100 mA)

Software

Driver CD	Windows 98, ME, 2000, XP, Vista
-----------	---------------------------------

Mechanical

Dimensions	2.6 x 1.3 x .6 in (6.5 x 3.2 x 1.6 cm)
Enclosure	In-line mounted, plastic
Weight	0.23 lbs (104.3 g) with USB Cable

Environmental

Operating Temp	32 to 158°F (0 to 70 °C)
Storage Temp	-40 to 185 °F (-40 to 85 °C)
Op Humidity	0 to 95 % (Non-condensing)
MTBF	1869313 hours
MTBF Method	Parts Count Reliability Prediction

Regulatory

Approvals	FCC, CE
-----------	---------

Package Contents

- ML485USB RS-485 2-Wire Mini-Converter
- 3ft (1m) USB Cable
- Datasheet
- CD with Drivers for Windows 98, ME, 2000, XP and Vista

Terminal Block

ML485USB	
Position	Signal
A(-)	Data A (-)
B(+)	Data B (+)
A(-)	Data A (-)
B(+)	Data B (+)
GND	Ground

Driver Installation

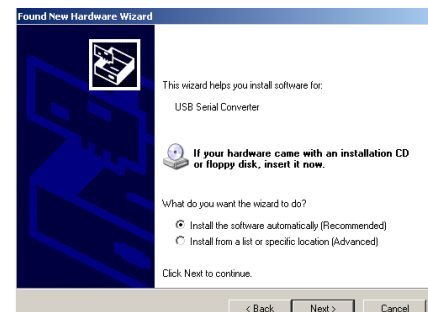
Screen shots are from Windows XP

THE FOUND NEW HARDWARE WIZARD WILL RUN TWICE. ONCE TO INSTALL THE USB DEVICE AND ONCE TO INSTALL THE SERIAL COM PORT.

- Connect the converter to your PC's USB port with the supplied cable.
- The Found New Hardware wizard will start.
- When prompted to connect to Windows Update to search for the driver, select "No, not at this time" and click on Next >



- Select Install the software automatically and click Next>



Driver Installation

continued

- A warning concerning Windows logo testing will be displayed. Click on Continue Anyway >



- The Completing the Found New Hardware Wizard will be displayed. Click on Finish >

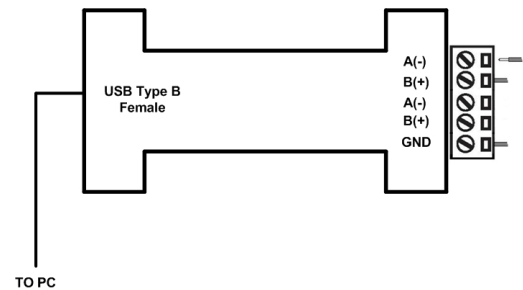
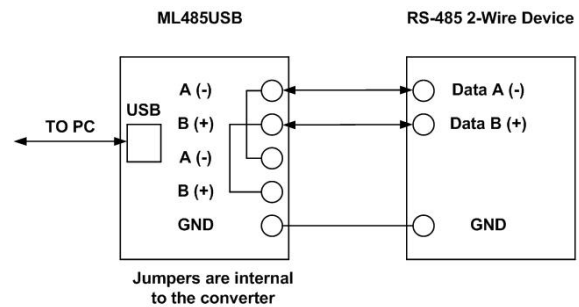
THE FOUND NEW HARDWARE WIZARD WILL RUN TWICE. ONCE TO INSTALL THE USB DEVICE AND ONCE TO INSTALL THE SERIAL COM PORT.



Installation Notes

- When the driver is installed, the converter is associated to that PC. If you plug in a different ML485USB, the driver must be installed again. Another COM port will also be created with the driver installation.

RS-485 2-W Wiring



- This converter is used for RS-485 2-Wire Systems.
- Loosen the screws to open the Terminal Block lead clamps for the A(-), B(+), and GND terminals.
- Insert the RS-485 2-Wire signal leads in accordance with the diagram above. The TB will accept 28 to 16 AWG wire.
- Tighten the screws to close the TB lead clamps. Ensure the clamps hold the leads securely. However, do not over tighten.
- Bias is provided by 4.7KΩ pull-up and pull-down resistors.
- If termination is required, it must be installed externally. In most cases, termination is not required.
- During operation, the receiver toggles with the transmit data.