

This guide is designed to familiarize the user with how to program the DTS Portable Display using a DI-001 DTS Portable Display Programming Interface.

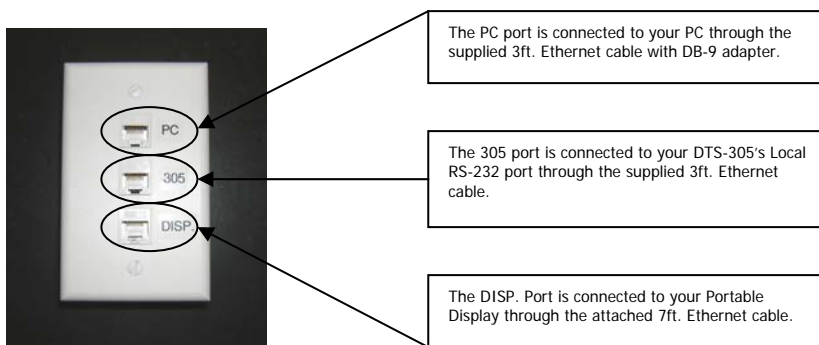
1. Supplied Items

The following component(s) are included in the DI-001 package:

- DI-001 DTS Portable Display Programming Interface
- 3ft. Ethernet cable
- 3ft. Ethernet cable with straight DB-9 adapter

2. Connecting the Display Programming Interface

The DI-001 is used in order to program your DTS Portable Display using DTS View software on your PC. The DI-100 has 3 ports labeled PC, 305, and DISP. In order for your PC to communicate with your Portable Display, the ports must be connected as follows:



DTS Portable Display Programmer



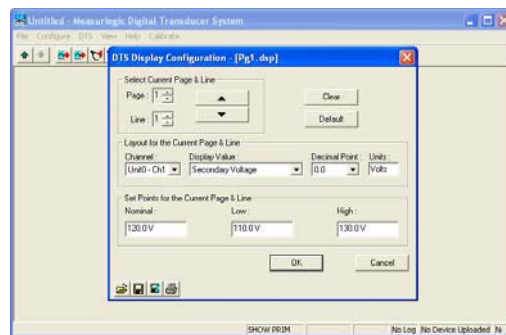
DTS-305 and DTS Portable Display Connected through a DI-001

3. Configuring your DTS Portable Display

Once power is applied to the DTS-305, the Portable Display will power on and read "No DTS". Now open DTS View and select "Transmission Setup..." under the DTS menu tab. From here, you can select the appropriate COM port number that is being used for communication. From here, select "Display..." under the "Configure" menu tab to configure the values of your Portable Display.



The screen will read "No DTS" when set up correctly



The "Display..." menu allows you to customize, save, and load your Display's configurations.

For complete instructions on configuring the DTS Display, please consult the DTS Display and DTS view manuals.