

MLG-TI-420 Series

Solid Core Current Transducers with 4-20 mA output

SPECIFICATIONS

Operating Conditions

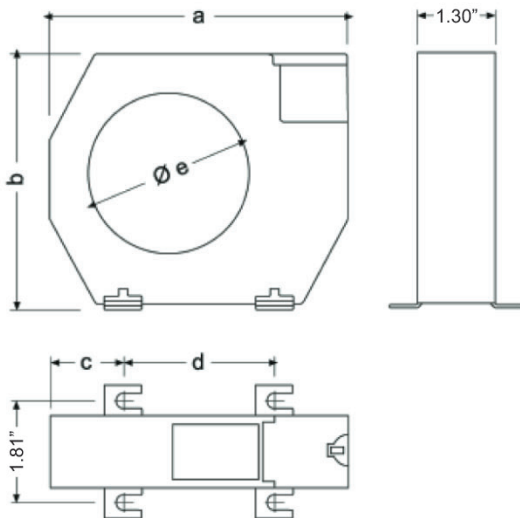
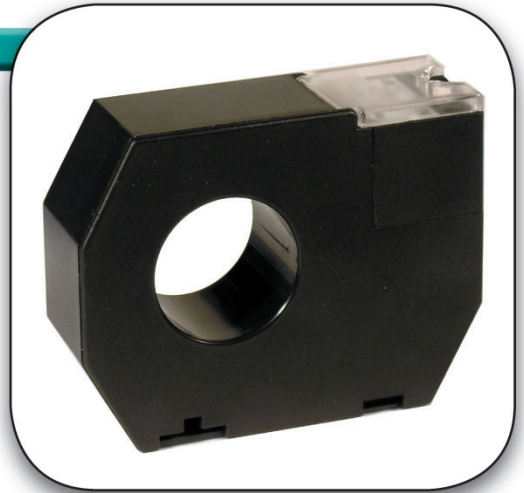
Class interval	32°F / +122°F
Operating temperature	-14°F / +122°F
Higher voltage for the material (U_m)	0.72 kV ac

Measurement Circuit

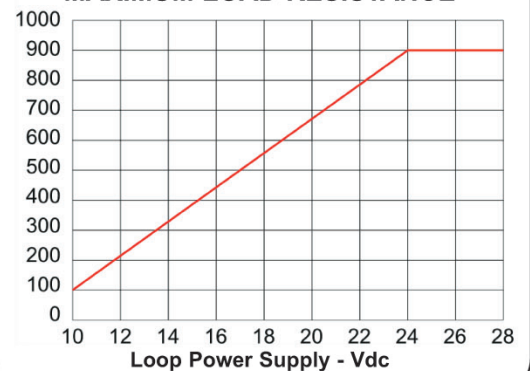
Primary current	According to type
Response in linear frequency	50...60 Hz
Secondary current	4...20 mA dc
Accuracy (between 5...110 % I_n)	+/-1.5 I_n reading
Overloads (at ambient temperature)	1.5 I_n permanently
Power Supply	10-28 Vdc, loop powered

Standards

IEC 44-1, UNE 21 088-1,
IEC 664, VDE0110, VDE0414,
UL 94, IEC 1010-1, EN 61010-1



MAXIMUM LOAD RESISTANCE



MLG-TI-420 SERIES			
Size in inches	MLG-TI-420-35	MLG-TI-420-70	MLG-TI-420-105
Current Ratings	2.5 - 250A	100 - 750A	250 - 1500A
A	3.94"	5.12"	6.7"
B	3.11"	4.33"	5.75"
C	1.02"	1.26"	1.5"
D	1.91"	2.6"	3.7"
E	1.38"	2.75"	4.14"

Call Toll Free: 1-877-PQ-SOLNS (1-877-777-6567) or 303-805-5252 email: info@measurlogic.com

MEASURLOGIC

www.measurlogic.com