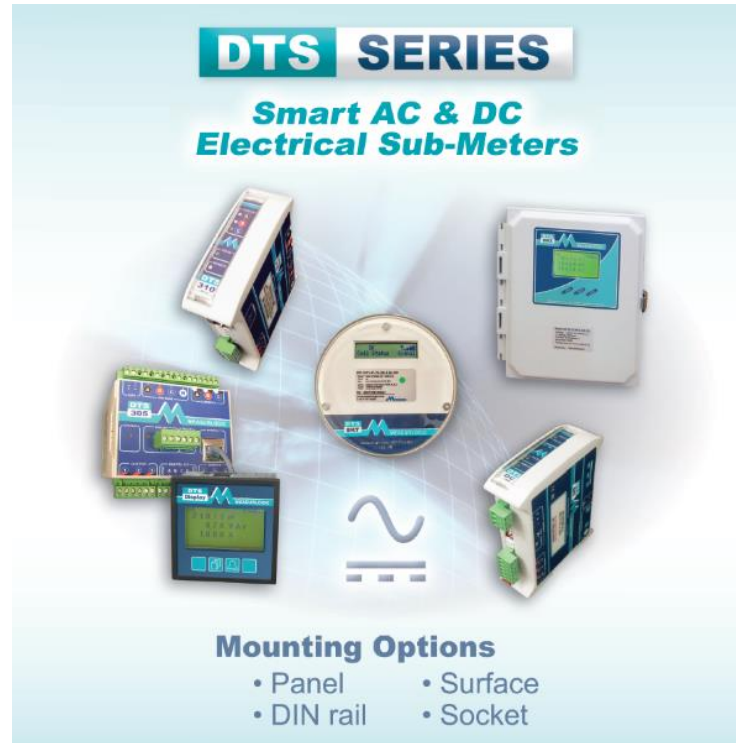


Measurlogic DTS RS-485 Meters



**Setting up your RS-485 Measurlogic DTS Meter
using DTS Config**

Download Required Files

To download the DTS Config software and its required drivers. Open your web browser of choice and search for Measurlogic.



Google Search

I'm Feeling Lucky

Download Required Files



Measurlogic



All

Maps

Videos

Shopping

News

More

Settings

Tools

About 13,200 results (0.59 seconds)

www.measurlogic.com

Measurlogic - Revenue Grade Electrical Submeters

Measurlogic has been manufacturing AC and DC energy / power sub-meters since 2000. under the DTS brand. They provide flexible communications interfaces ...

All Products

Measurlogic is your energy management and power quality ...

Contact

Contact. Measurlogic Inc. is your Energy Efficiency partner. The ...

DTS 310

DTS 310. DIN rail Mount / Line Powered. Compact – 4.73" L x 1 ...

[More results from measurlogic.com »](#)

About

Our company was founded in 2000 on over 30 years of experience ...

Software and Drivers

Energy management downloads and software from Measurlogic ...

DTS 307

Ultra-Compact: 3.11" L x 1.38" W x 4.25" H; ANSI C12.20 ...

Click on the first link that is shown. This will take you to Measurlogic.com.

MEASURLOGIC



www.measurlogic.com

Download Required Files

[Home](#) [About](#) [Contact](#) | [Login](#) [My Quote \(0\)](#)

Call 877-777-6567

MEASURLOGIC

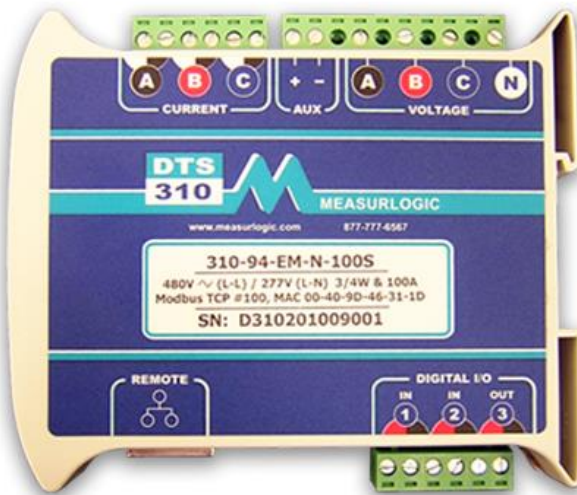
[ELECTRIC SUBMETERS](#)

[CURRENT SENSORS](#)

[DEMAND CONTROL](#)

[POWER CONDITIONING](#)

[SOFTWARE](#)



INCREASE
EFFICIENCY
WITH THE

**DTS
310**



Line
Powered



Four Quadrant
NET Meter



Revenue
Grade



Flexible
Communication

On the Measurlogic.com
website click the
“software” button.



www.measurlogic.com

Download Required Files

[ELECTRIC SUBMETERS](#)[CURRENT SENSORS](#)[DEMAND CONTROL](#)[POWER CONDITIONING](#)[SOFTWARE](#)

SOFTWARE / DRIVERS

Access the software downloads below to get started with your Measurlogic electrical metering products. Still have questions? [Contact us](#) today.

DTS CONFIG (MODBUS 485/TCP BASED)

DTS Config is a **Modbus Master software application** for easy configuration and monitoring of the following DTS AC and DC submeters and peripherals. For DTS meters with **BACnet MS/TP** or **IP** interfaces see [BACnet Explorers](#) below.

[DTS 305](#) – v1.10 and up

[DTS 307](#) – any firmware release

[DTS 310](#) – any firmware release

[DTS SMX](#) – any firmware release

[DTS SKT/D](#) – any firmware release

[DTS DC](#) – any firmware release

DTS 105 – any firmware release

[DTS Display](#) – v2.11 and up

DTS 300 – NOT compatible

On the software page scroll down until you find a “Download DTS Config” button and click on it. This will download DTS Config to your computers filing system.

[DOWNLOAD DTS CONFIG \(1.9 Mb\) \[ZIP\]](#) — Current Version 1.45.0.288

Windows XP SP3 (32 bit) and 7, 8 or 10 (32 or 64 bit) Requires .NET 4.0 or later
Extract the installation files from the zip file to a folder before running the setup
Recommendation: Uninstall all previous versions before install.

DTS TOOLBOX (USE WITH DTS SUBMETERS WITH EMBEDDED ETHERNET PORT)

Download Required Files

Windows XP SP3 (32 bit) and 7, 8 or 10 (32 or 64 bit) Requires .NET 4.0 or later
Extract the installation files from the zip file to a folder before running the setup
Recommendation: Uninstall all previous versions before install.

DTS SECURE TOOLBOX (USE WITH DTS IOT GATEWAYS)

The DTS Secure Toolbox utility can detect and connect to the DTS IoT Gateways (wired / wireless OR 4G cell modem versions)

[DTS IoT Gateways](#)

[DOWNLOAD DTS SECURE TOOLBOX \(10.9 Mb\).ZIP](#) — Current Version 1.08aE

BACNET EXPLORERS

The following 3rd party BACnet Explorers have been used successfully with the DTS family of AC and DC BACnet MS/TP and BACnet/IP sub-meters. These links are for your convenience. Measurlogic does not offer technical support for these products.

- [YABE \(Yet Another BACnet Explorer\)](#)

WINDOWS DRIVERS (USB TO RS-485 CONVERTERS)

Current:

[CCOM-0017 Drivers \(1.6 Mb\).ZIP](#)



These drivers are suitable for the following windows operating systems:

- Up to Windows 10 (32/64)

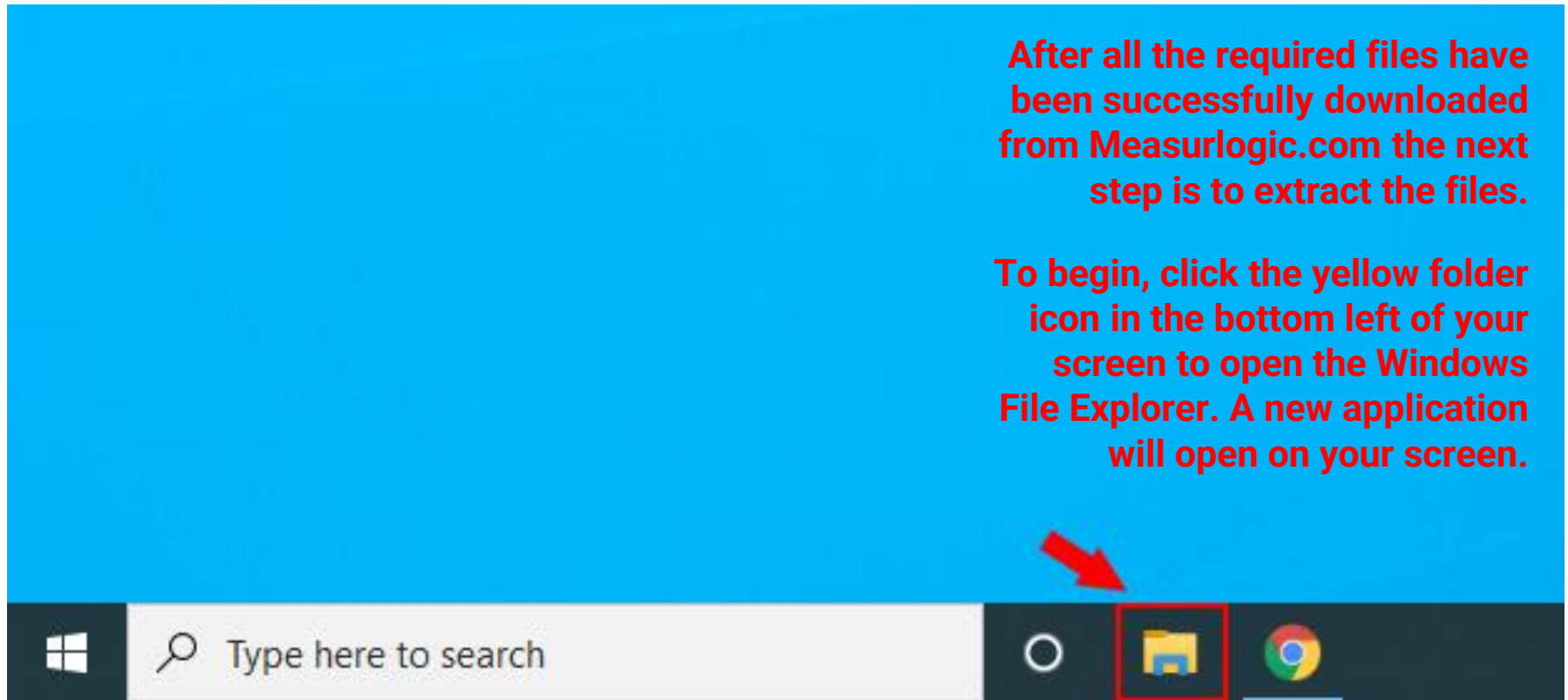
On the same page scroll down to the bottom until you find a “CCOM-0017 Drivers” button. This will download the required drivers to your computers filing system.



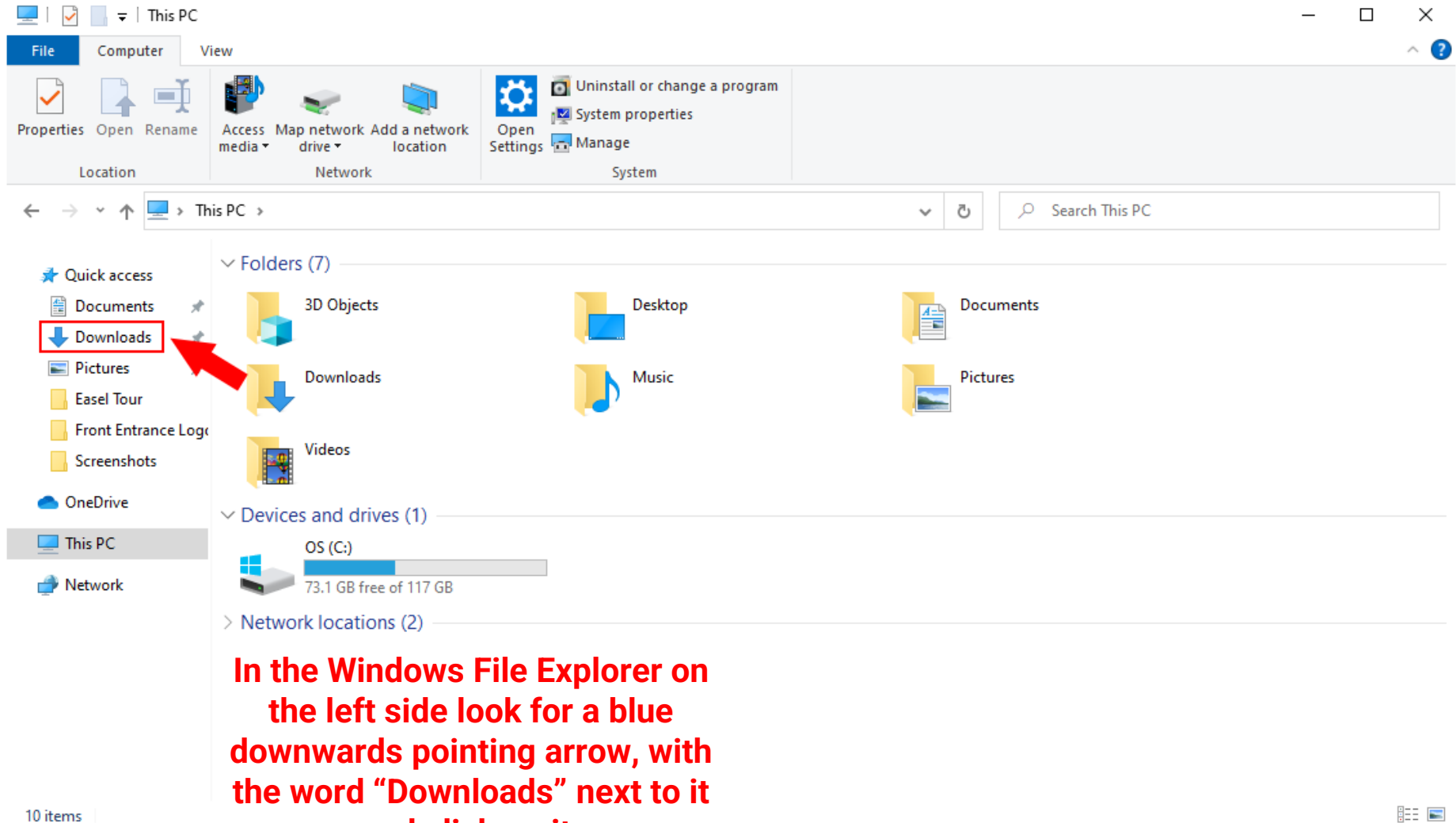
Installing DTS Config

After all the required files have been successfully downloaded from Measurlogic.com the next step is to extract the files.

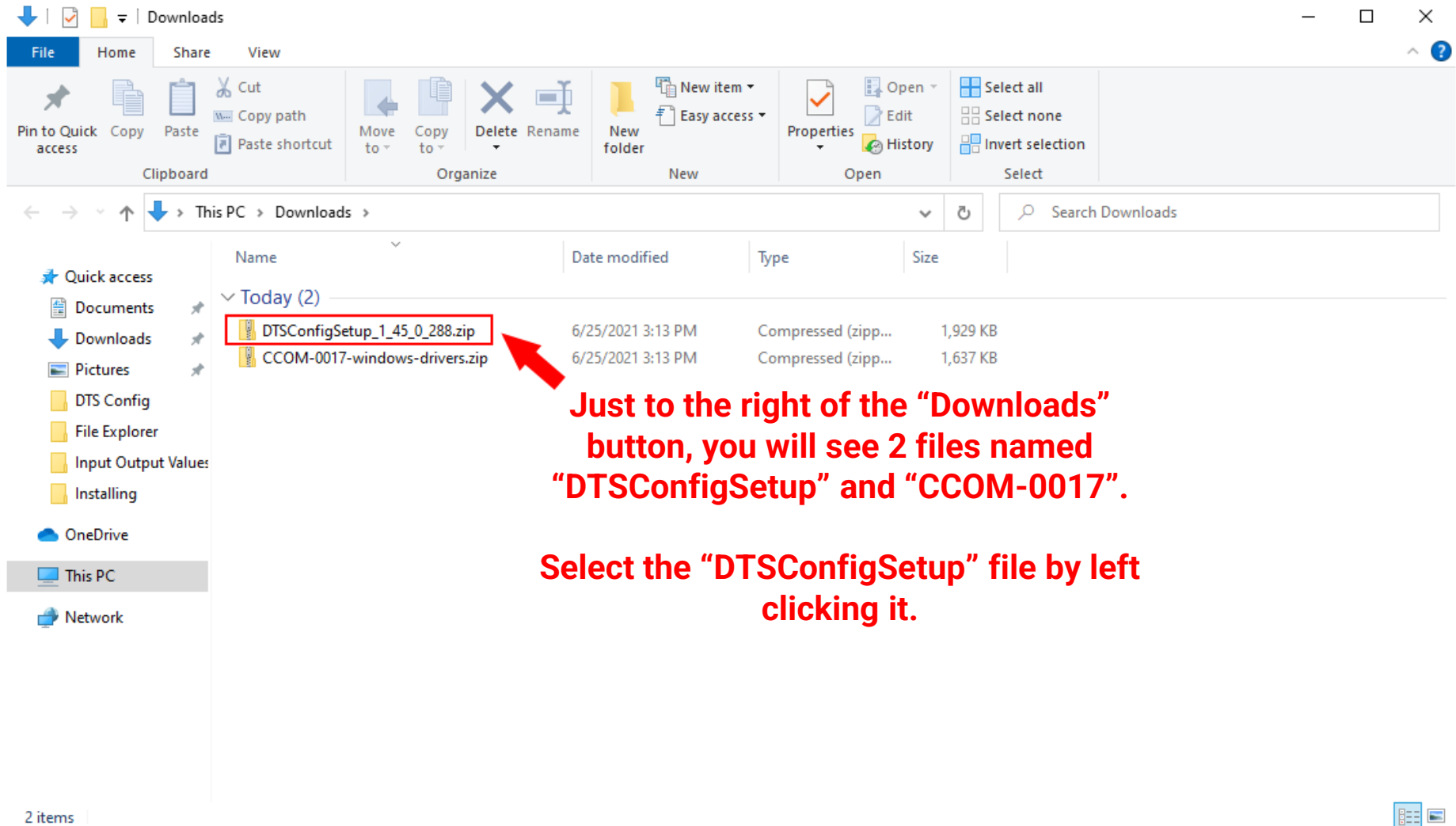
To begin, click the yellow folder icon in the bottom left of your screen to open the Windows File Explorer. A new application will open on your screen.



Installing DTS Config



Installing DTS Config



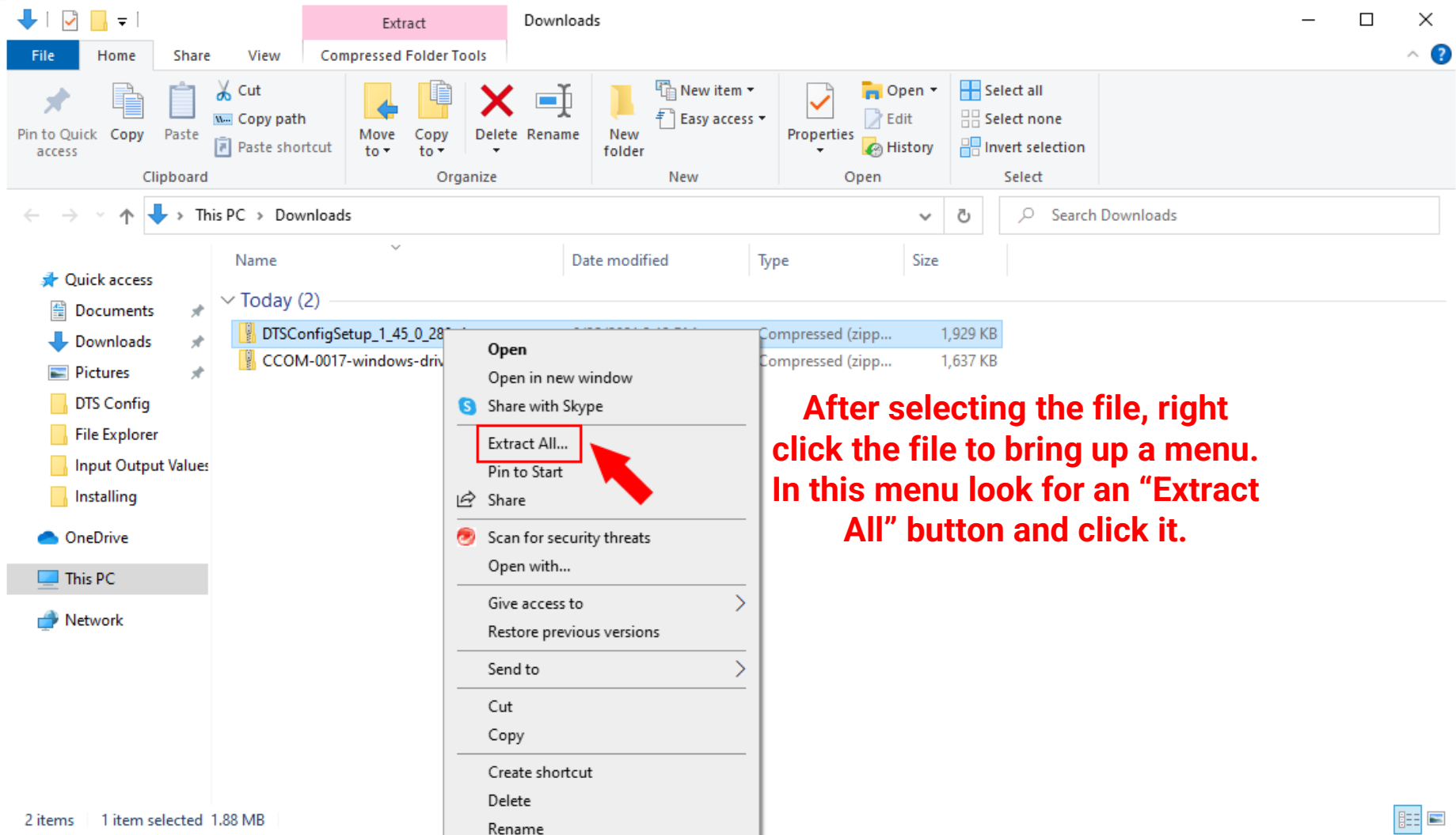
File Explorer window showing the Downloads folder. The left sidebar shows the navigation pane with 'Downloads' selected. The main pane displays two files:

Name	Date modified	Type	Size
DTSCfgSetup_1_45_0_288.zip	6/25/2021 3:13 PM	Compressed (zipp...	1,929 KB
CCOM-0017-windows-drivers.zip	6/25/2021 3:13 PM	Compressed (zipp...	1,637 KB

Just to the right of the "Downloads" button, you will see 2 files named "DTSCfgSetup" and "CCOM-0017".

Select the "DTSCfgSetup" file by left clicking it.

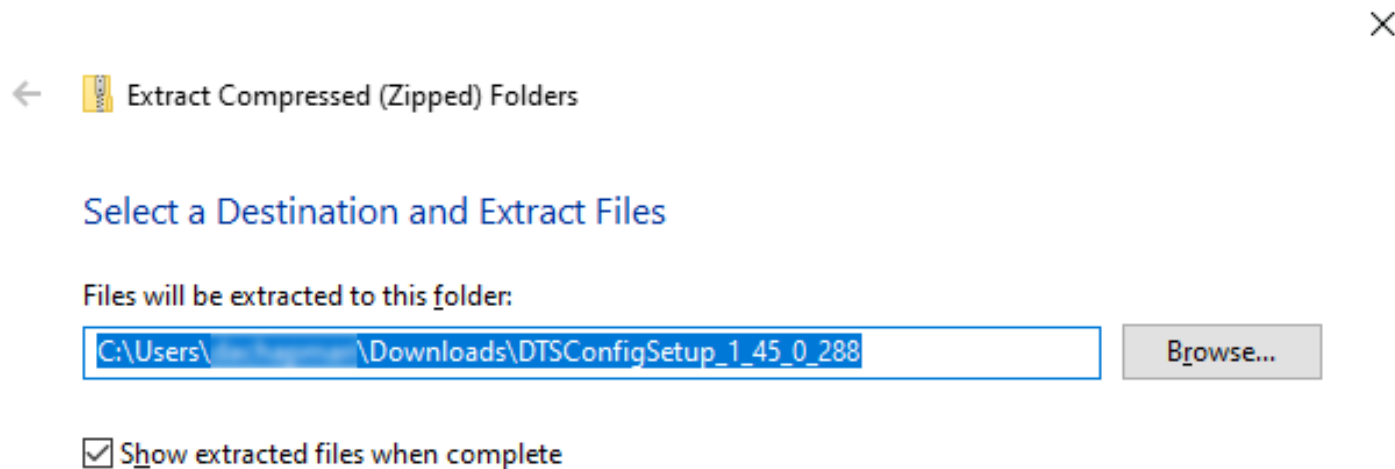
Installing DTS Config



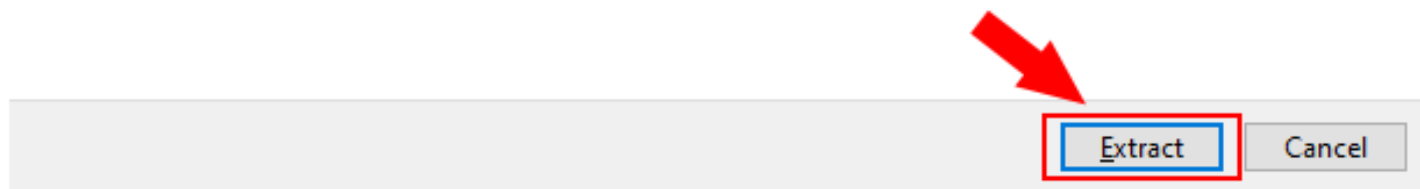
The screenshot shows a Windows File Explorer window titled 'Downloads'. The ribbon includes 'File', 'Home', 'Share', 'View', and 'Compressed Folder Tools'. The 'Extract' button is highlighted in pink. The left sidebar shows 'Quick access' with 'Downloads' selected. The main pane shows two files: 'DTSCfgSetup_1_45_0_28' (Compressed (zip) file, 1,929 KB) and 'CCOM-0017-windows-driv' (Compressed (zip) file, 1,637 KB). A right-click context menu is open over the first file, with 'Extract All...' highlighted by a red box and a red arrow. The status bar at the bottom indicates '2 items | 1 item selected | 1.88 MB'.

After selecting the file, right click the file to bring up a menu. In this menu look for an “Extract All” button and click it.

Installing DTS Config



A new window will pop up, click the "Extract" button in the bottom right of the window.



Installing DTS Config

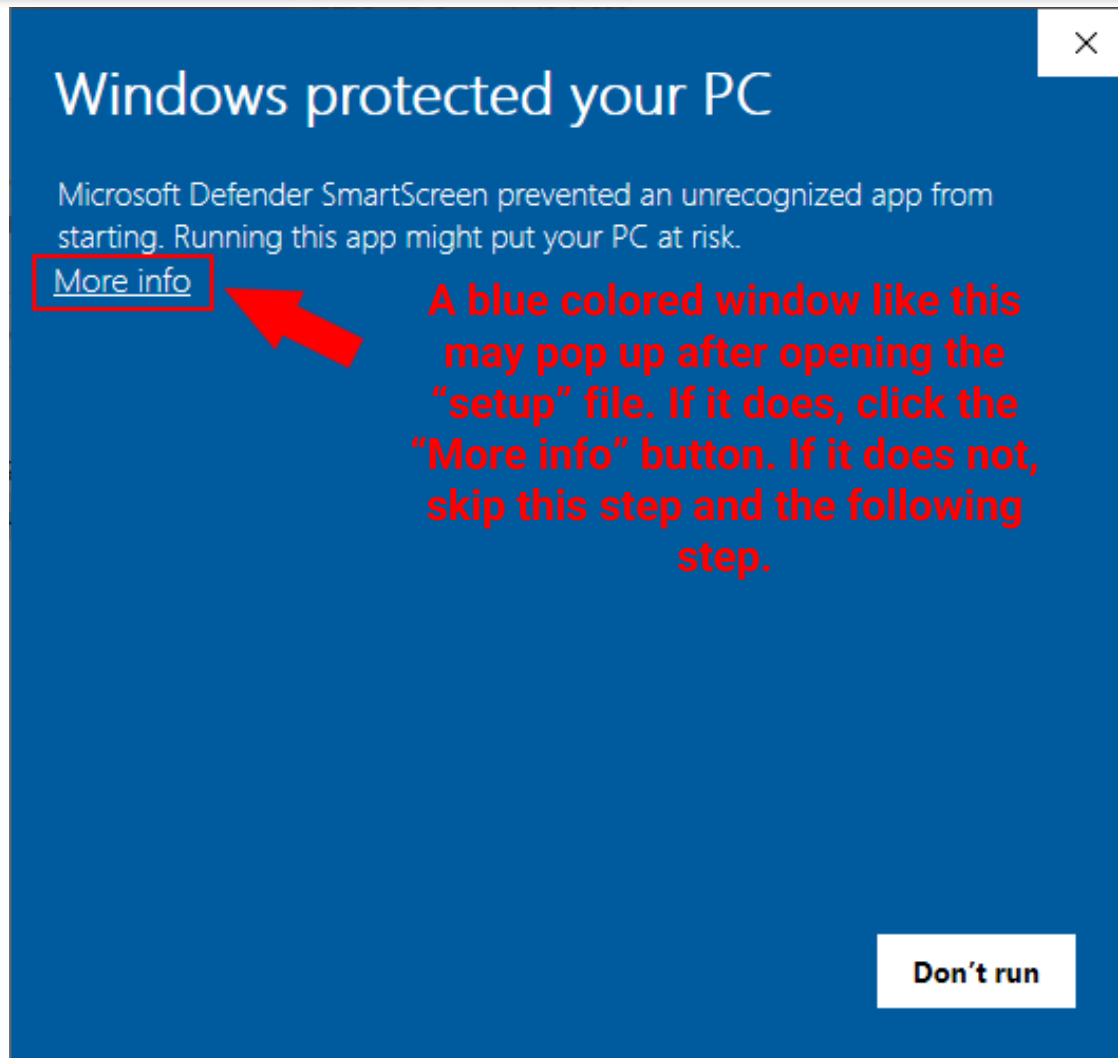
File Explorer window showing the contents of the folder `DTSTConfigSetup_1_45_0_288` located in `Downloads`.

The folder contains two files:

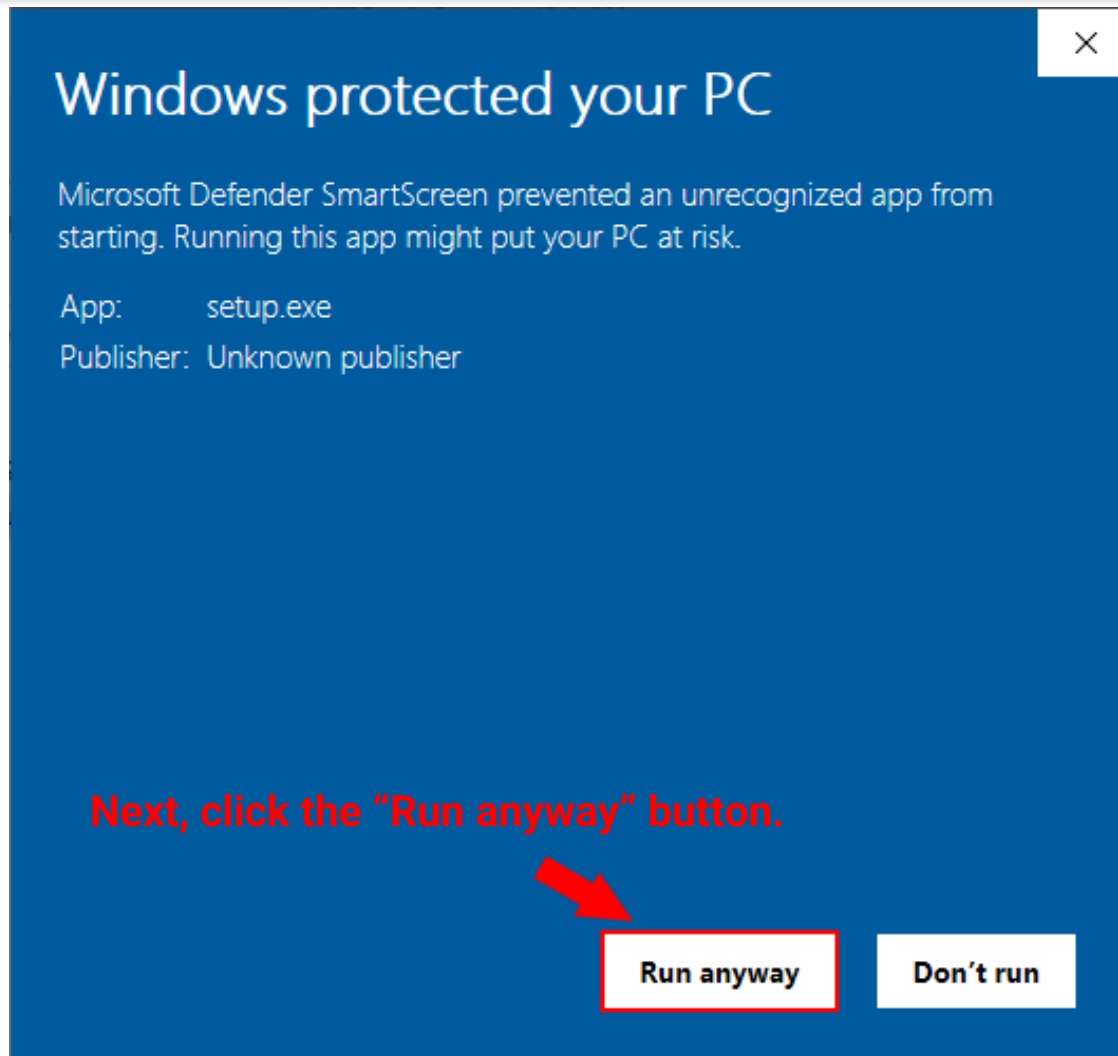
Name	Date modified	Type	Size
DTSTConfigSetup.msi	6/25/2021 2:42 PM	Windows Installer ...	4,714 KB
setup.exe	6/25/2021 2:42 PM	Application	519 KB

Once the extract has been completed a new File Explorer window will open with 2 files inside called "DTSTConfigSetup" and "Setup". Double left click on the file called "setup".

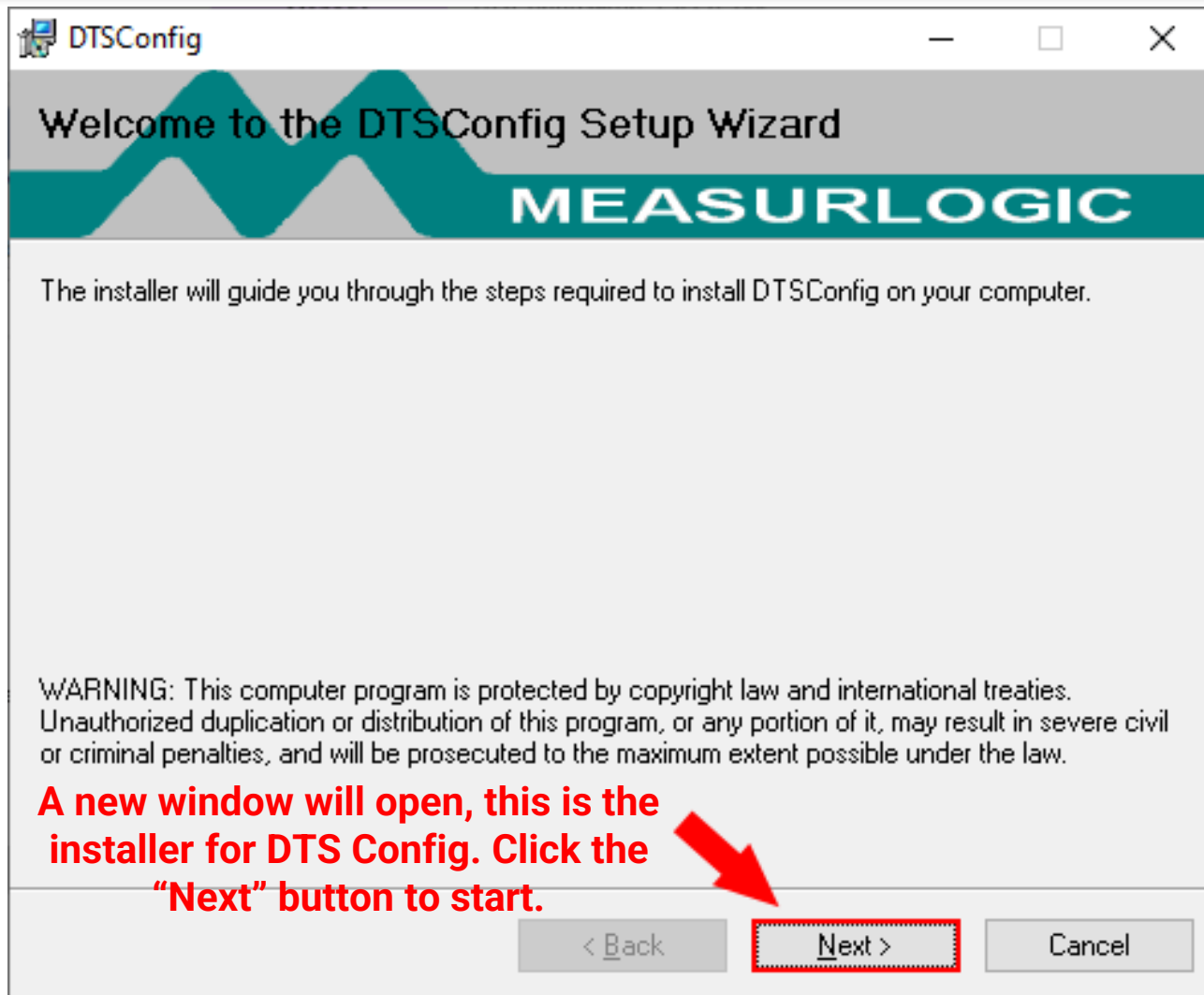
Installing DTS Config



Installing DTS Config



Installing DTS Config



Installing DTS Config

DTSConfig

Select Installation Folder

MEASURLOGIC

The installer will install DTSConfig to the following folder.
To install in this folder, click "Next". To install to a different folder, enter it below or click "Browse".

Folder:
C:\Program Files (x86)\Measurlogic\DTSConfig\

Browse...

Disk Cost...

Install DTSConfig for yourself, or for anyone who uses this computer:

☒ Everyone

☐ Just me

< Back

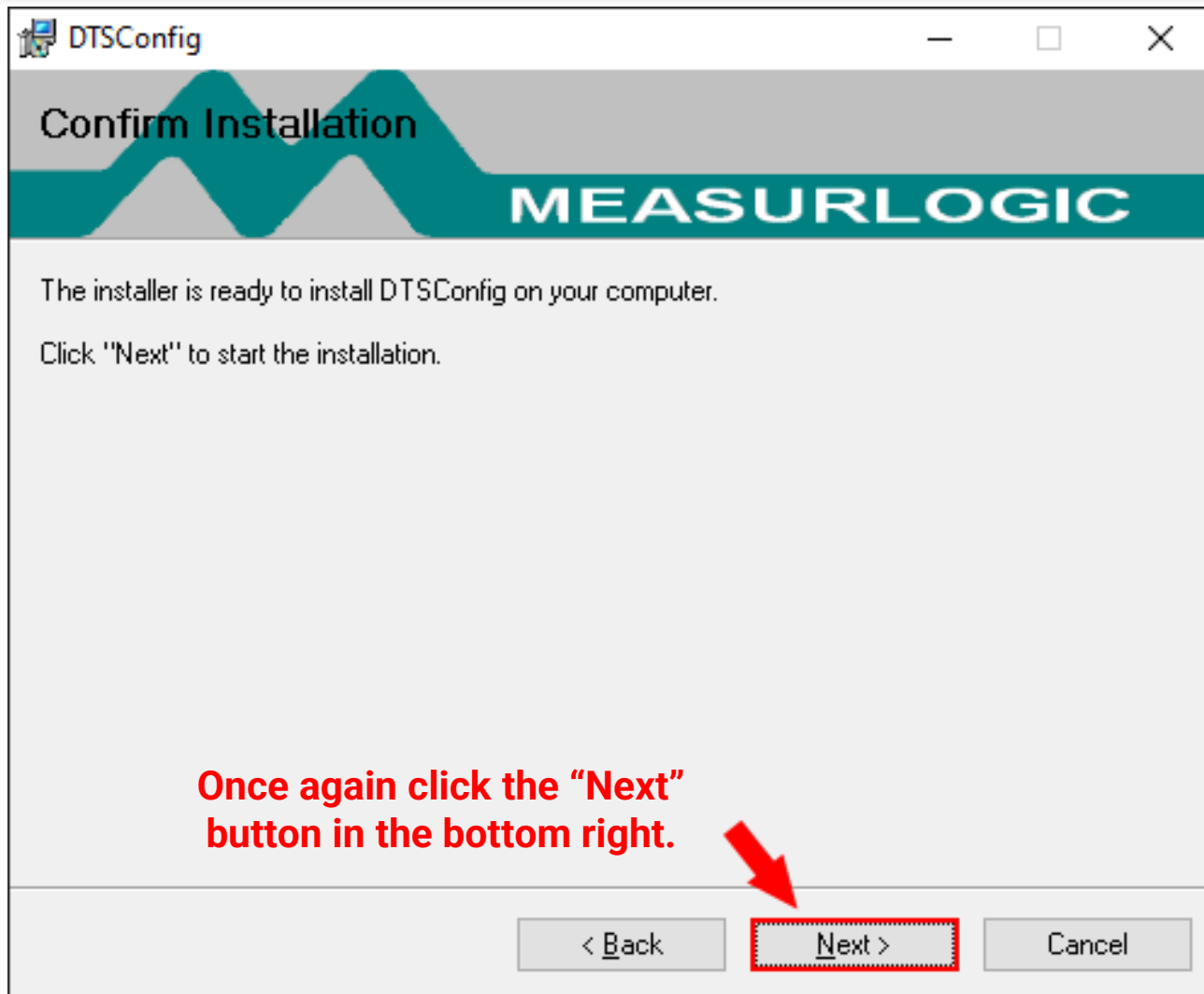
Next >

Cancel

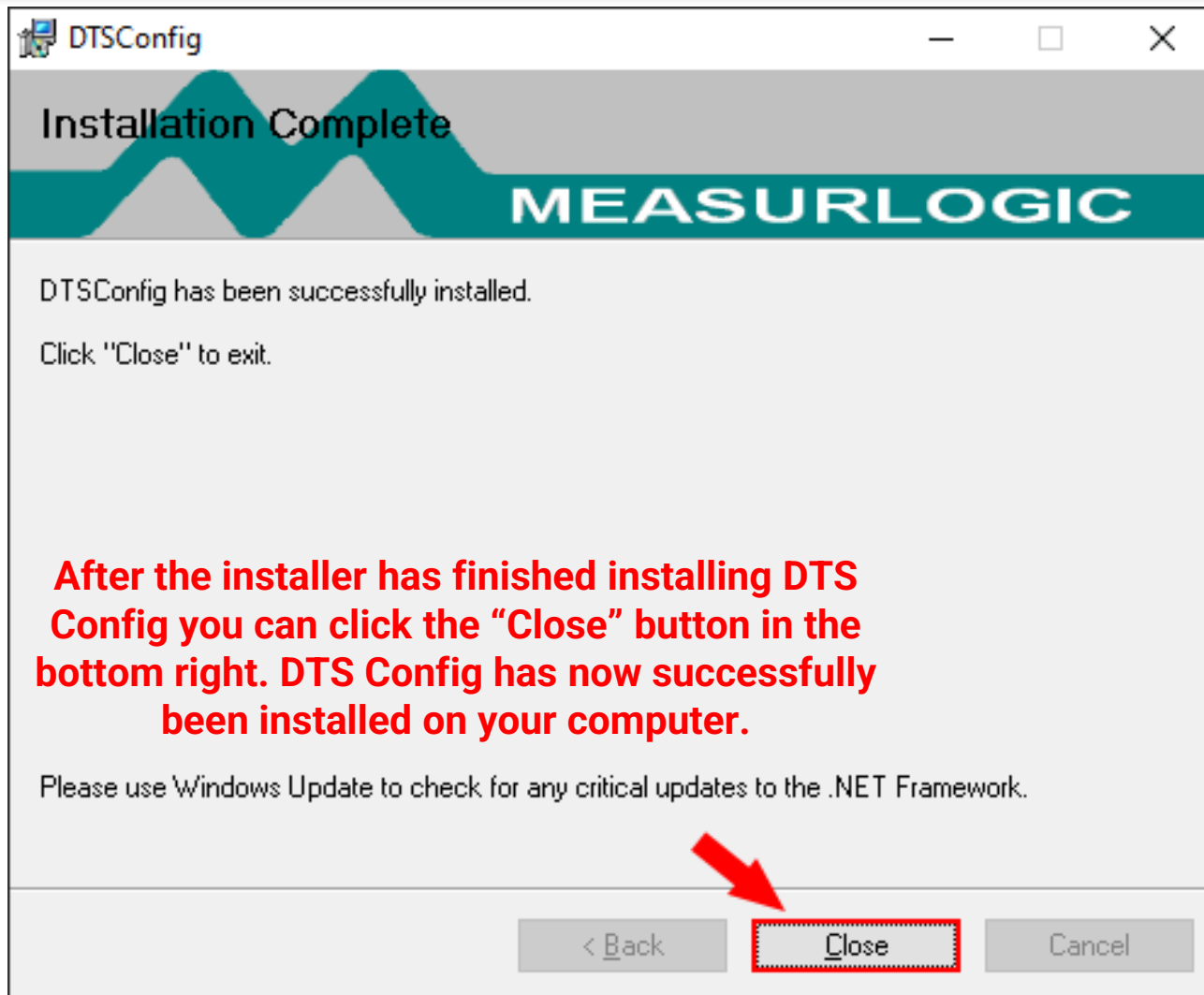
Next it will ask you where you would like to install the DTS Config software.

Leave the suggested folder unchanged. Click the "Next" button.

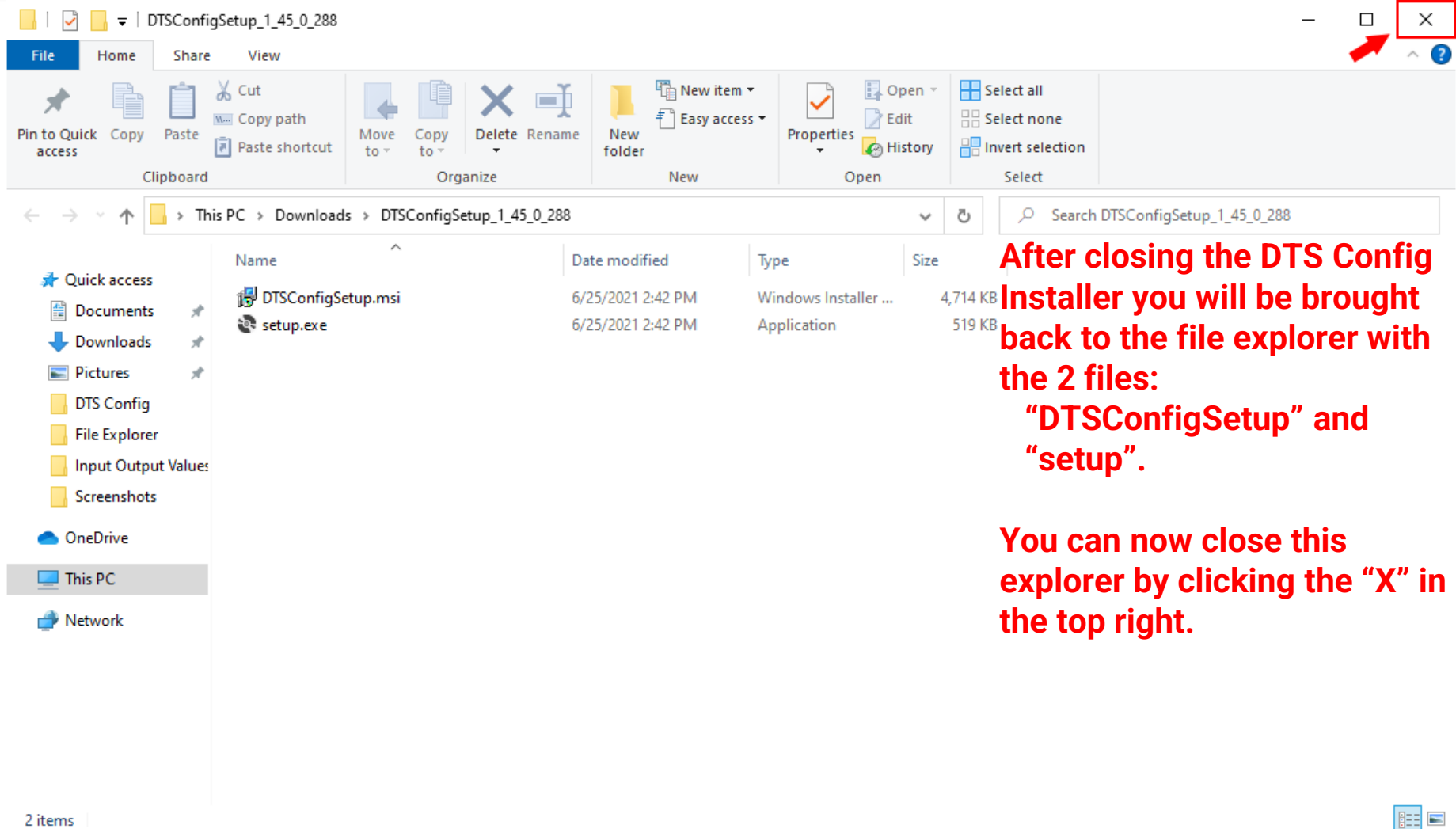
Installing DTS Config



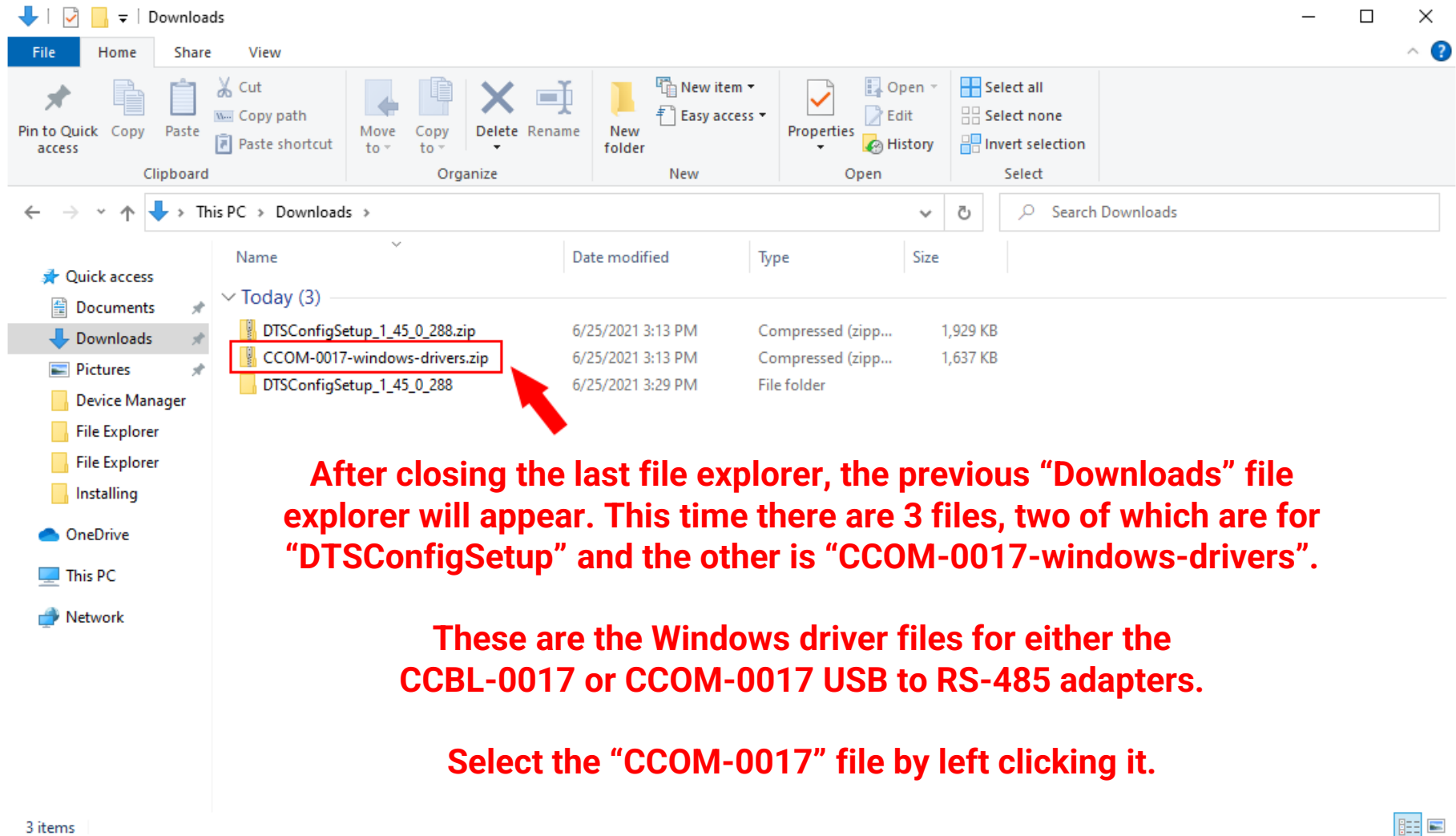
Installing DTS Config



Installing USB to RS-485 Drivers



Installing USB to RS-485 Drivers



File Explorer window showing the Downloads folder. The file list contains three items:

Name	Date modified	Type	Size
DTSCfgSetup_1_45_0_288.zip	6/25/2021 3:13 PM	Compressed (zipp...	1,929 KB
CCOM-0017-windows-drivers.zip	6/25/2021 3:13 PM	Compressed (zipp...	1,637 KB
DTSCfgSetup_1_45_0_288	6/25/2021 3:29 PM	File folder	

After closing the last file explorer, the previous "Downloads" file explorer will appear. This time there are 3 files, two of which are for "DTSCfgSetup" and the other is "CCOM-0017-windows-drivers".

These are the Windows driver files for either the CCBL-0017 or CCOM-0017 USB to RS-485 adapters.

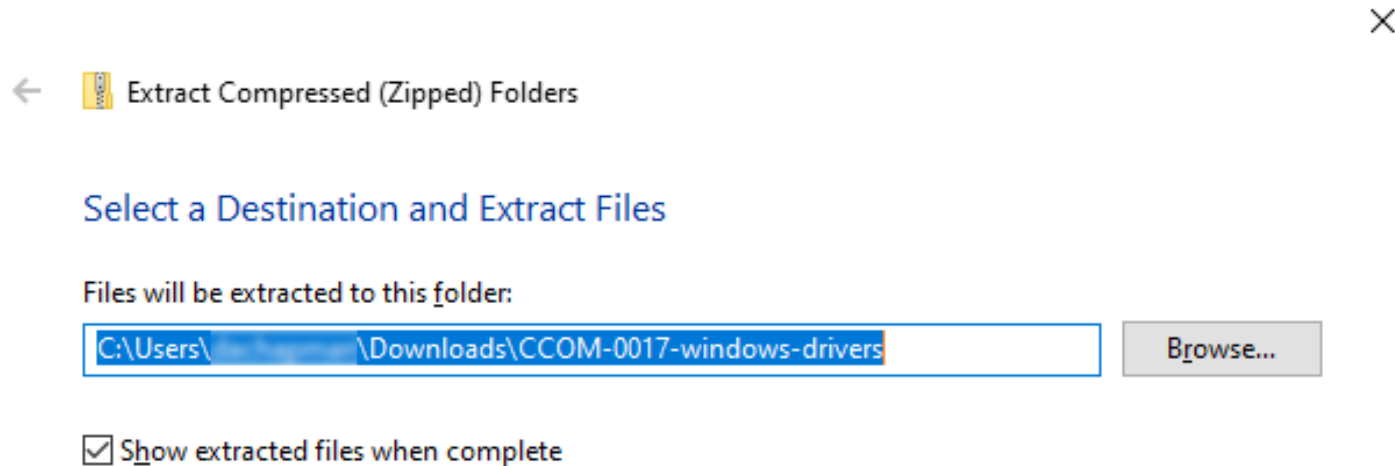
Select the "CCOM-0017" file by left clicking it.

Installing USB to RS-485 Drivers

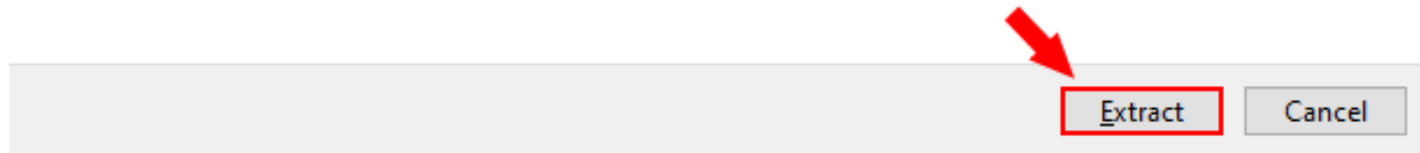
File Explorer window showing the 'Downloads' folder. A right-click context menu is open over the file 'CCOM-0017-windows-drivers.zip', with the 'Extract All...' option highlighted by a red box and a red arrow.

After selecting the file right click the file and a menu will open once again. In the menu look for an "Extract All" button and click it.

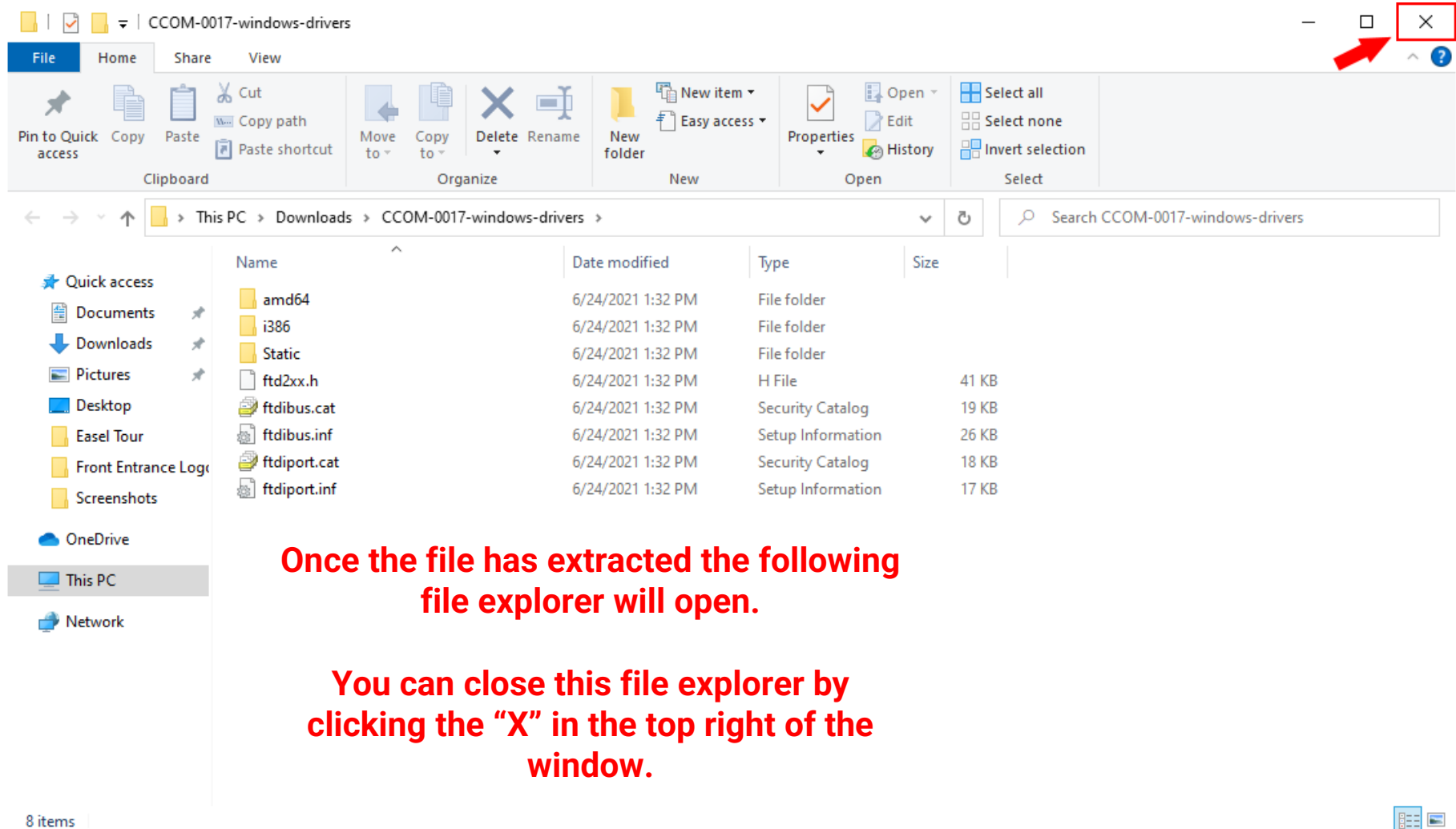
Installing USB to RS-485 Drivers



Just like before a new window will open, click the “Extract” button.



Installing USB to RS-485 Drivers



Installing USB to RS-485 Drivers

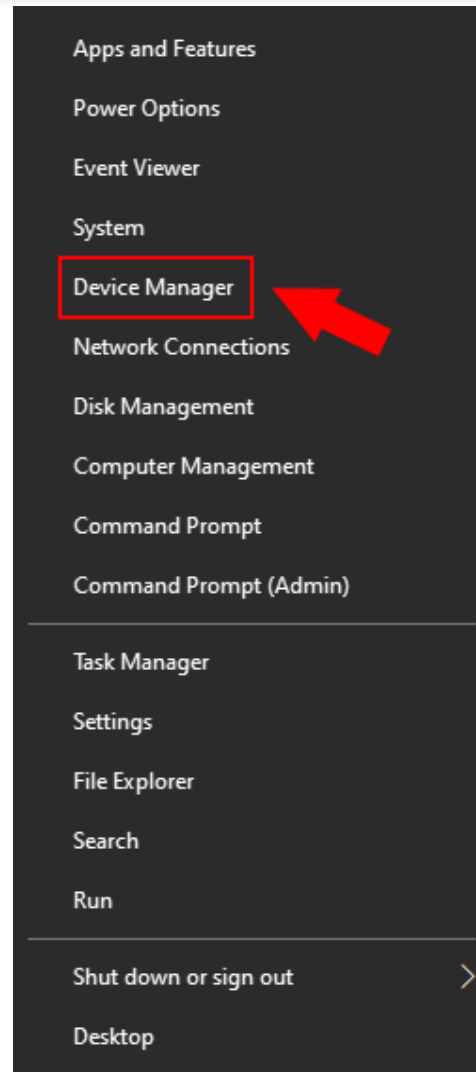
Right click the windows icon button in the bottom left of your screen. This will open a menu.



Type here to search

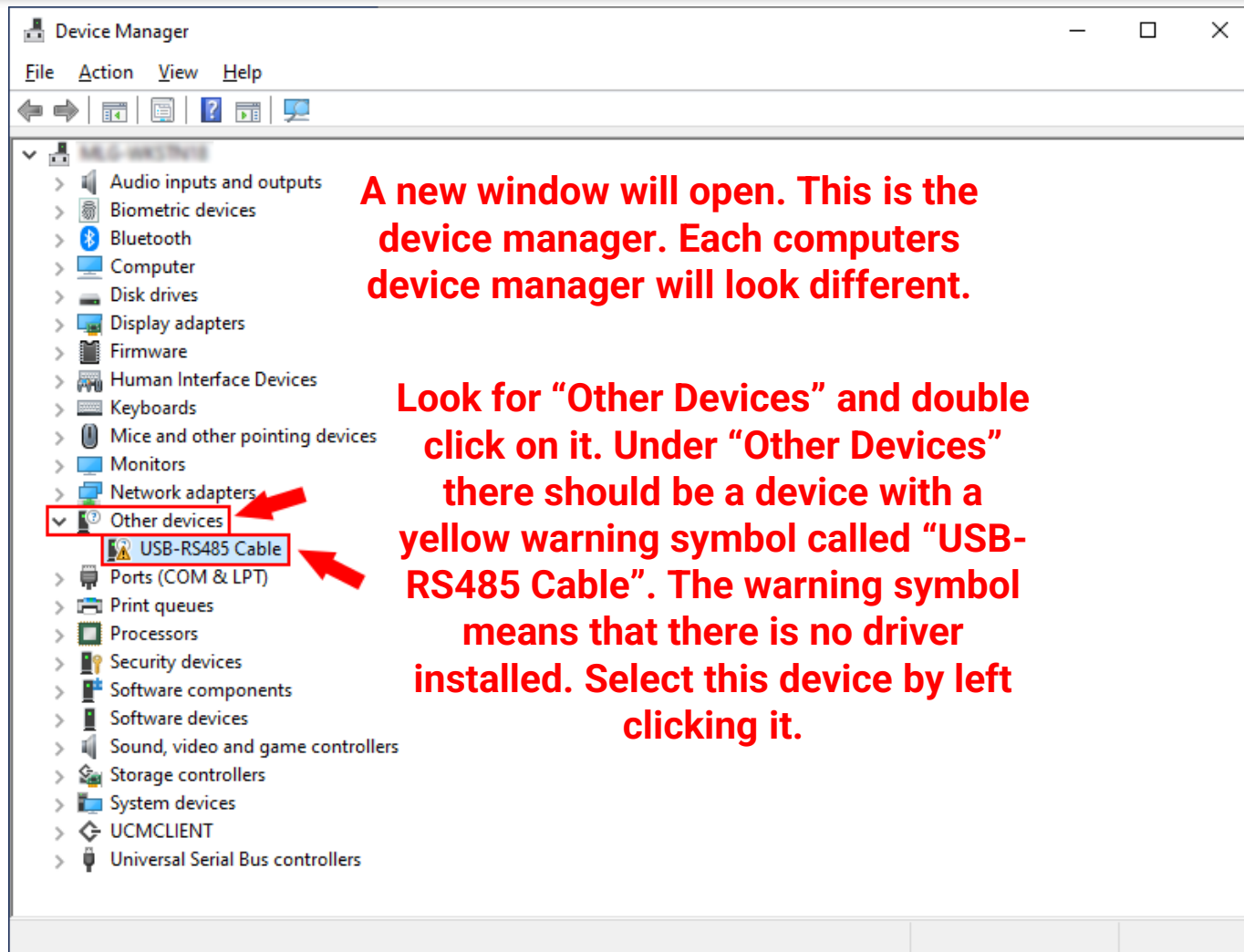


Installing USB to RS-485 Drivers

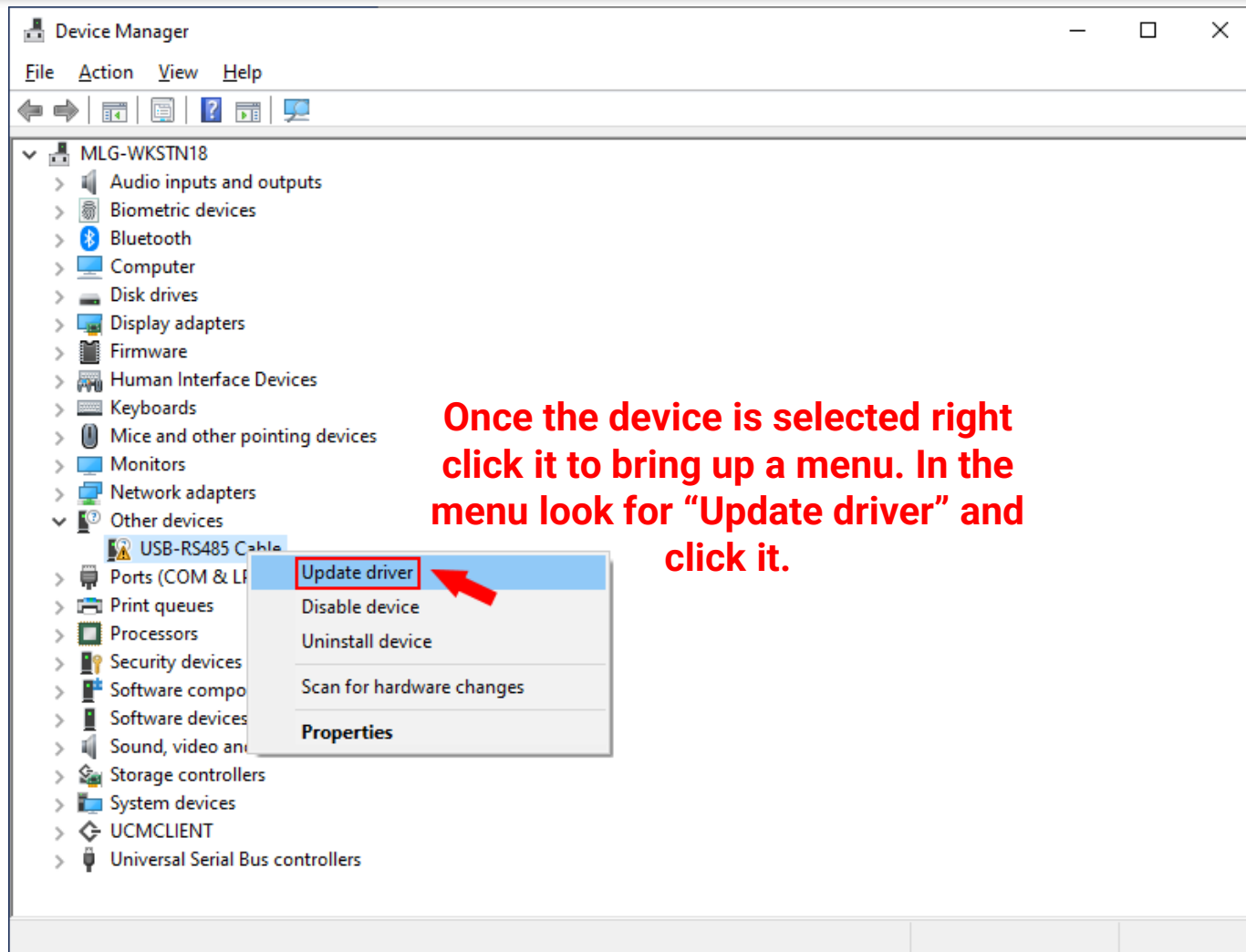


In this menu look for
“Device Manager”
and click on it.

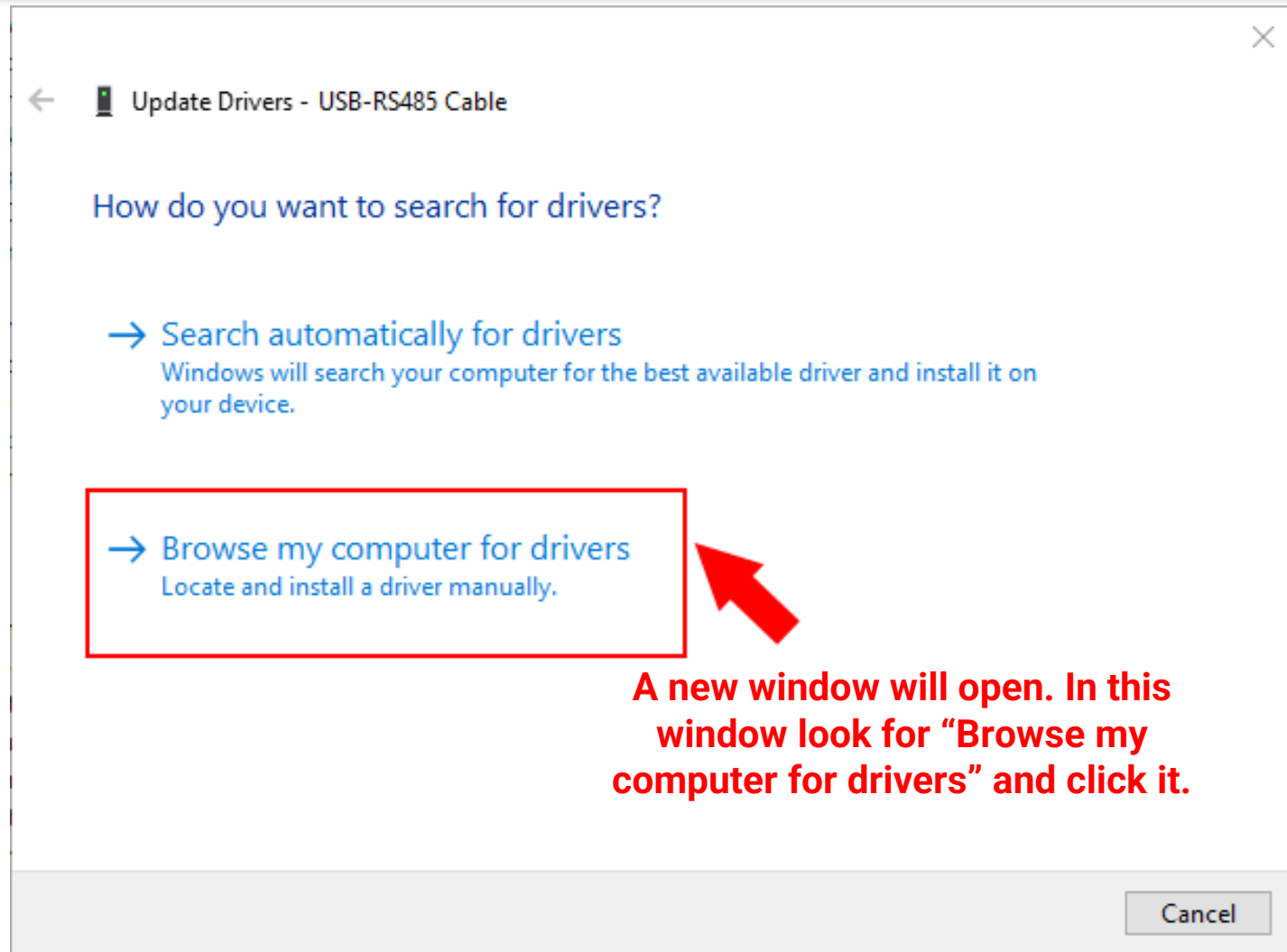
Installing USB to RS-485 Drivers



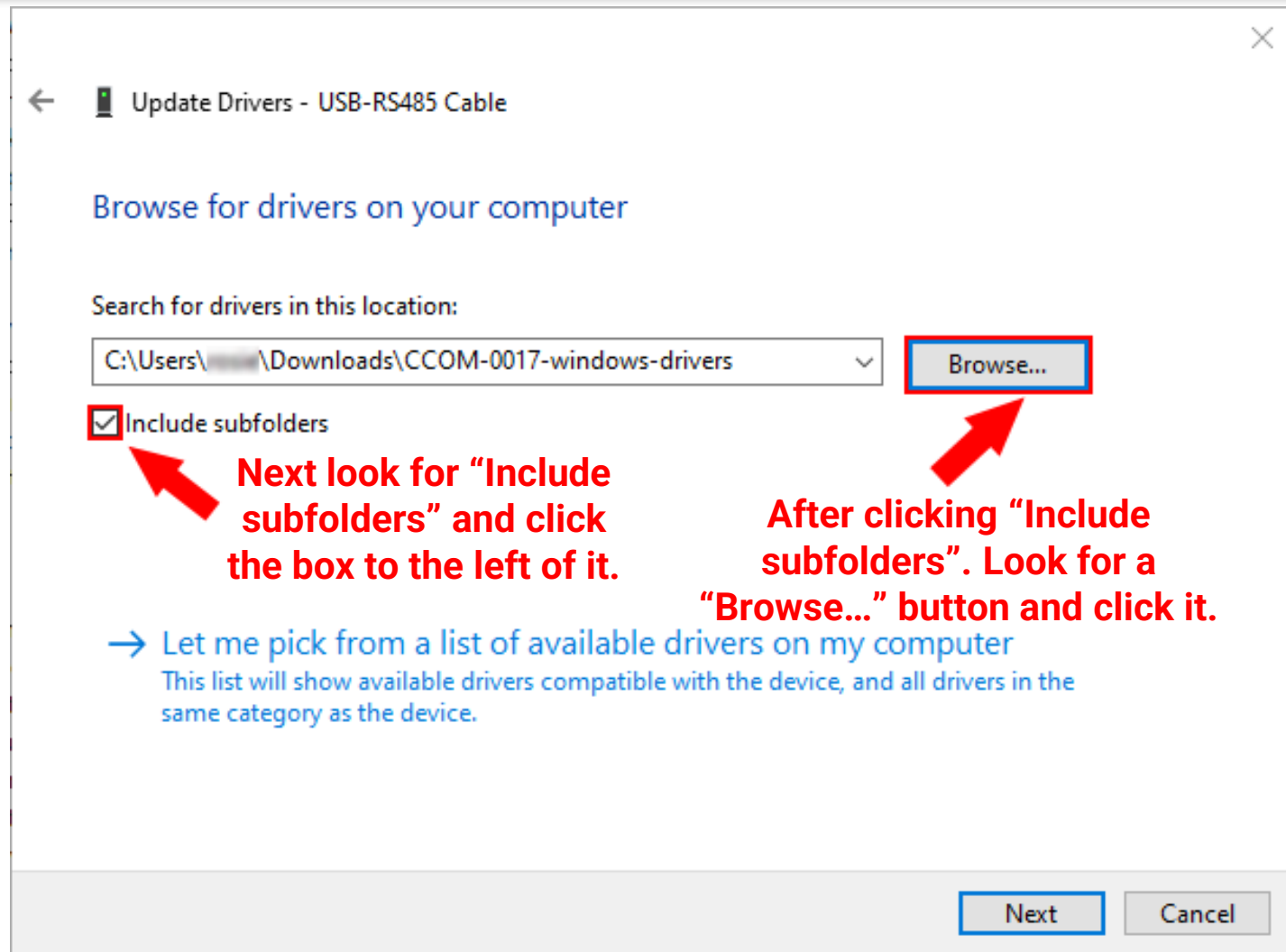
Installing USB to RS-485 Drivers



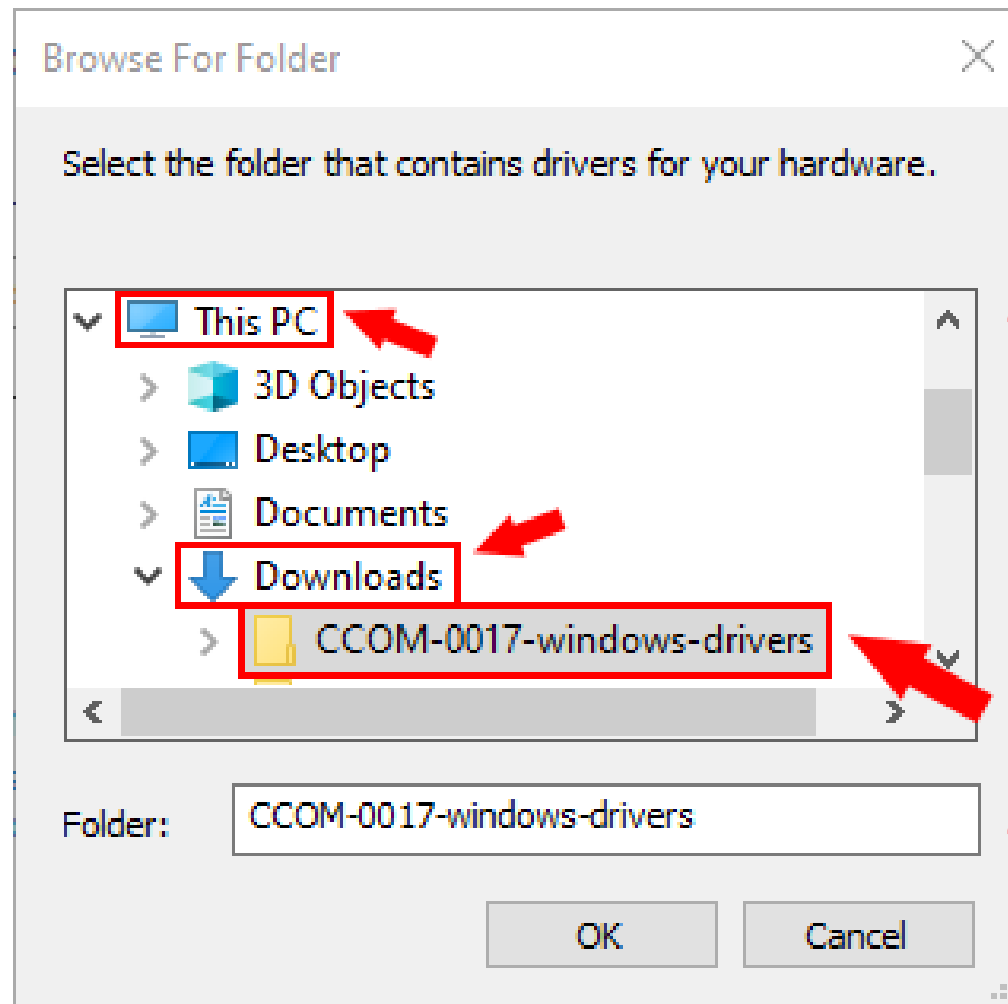
Installing USB to RS-485 Drivers



Installing USB to RS-485 Drivers



Installing USB to RS-485 Drivers

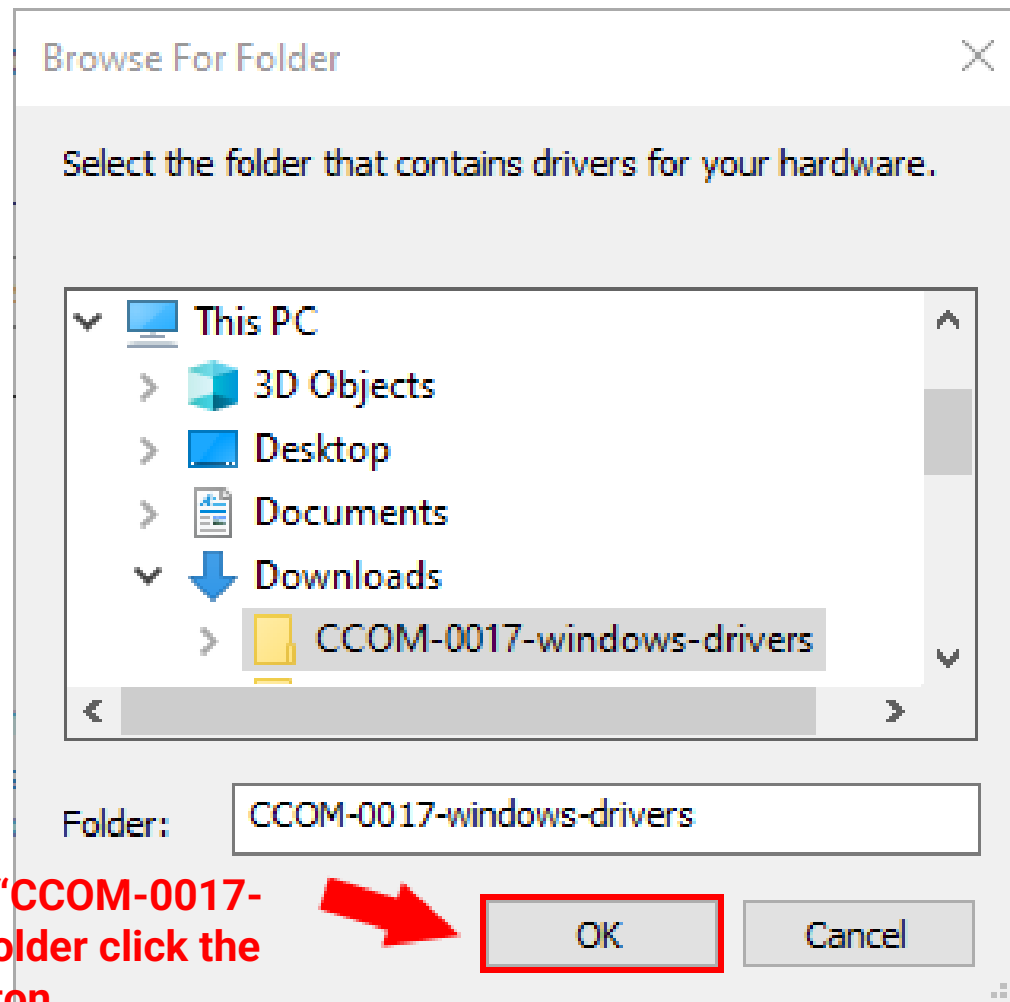


A new window will open. In this window we will select the "CCOM-0017-windows-drivers" folder from earlier.

First look for "This PC" and click it, then find "Downloads" and click it.

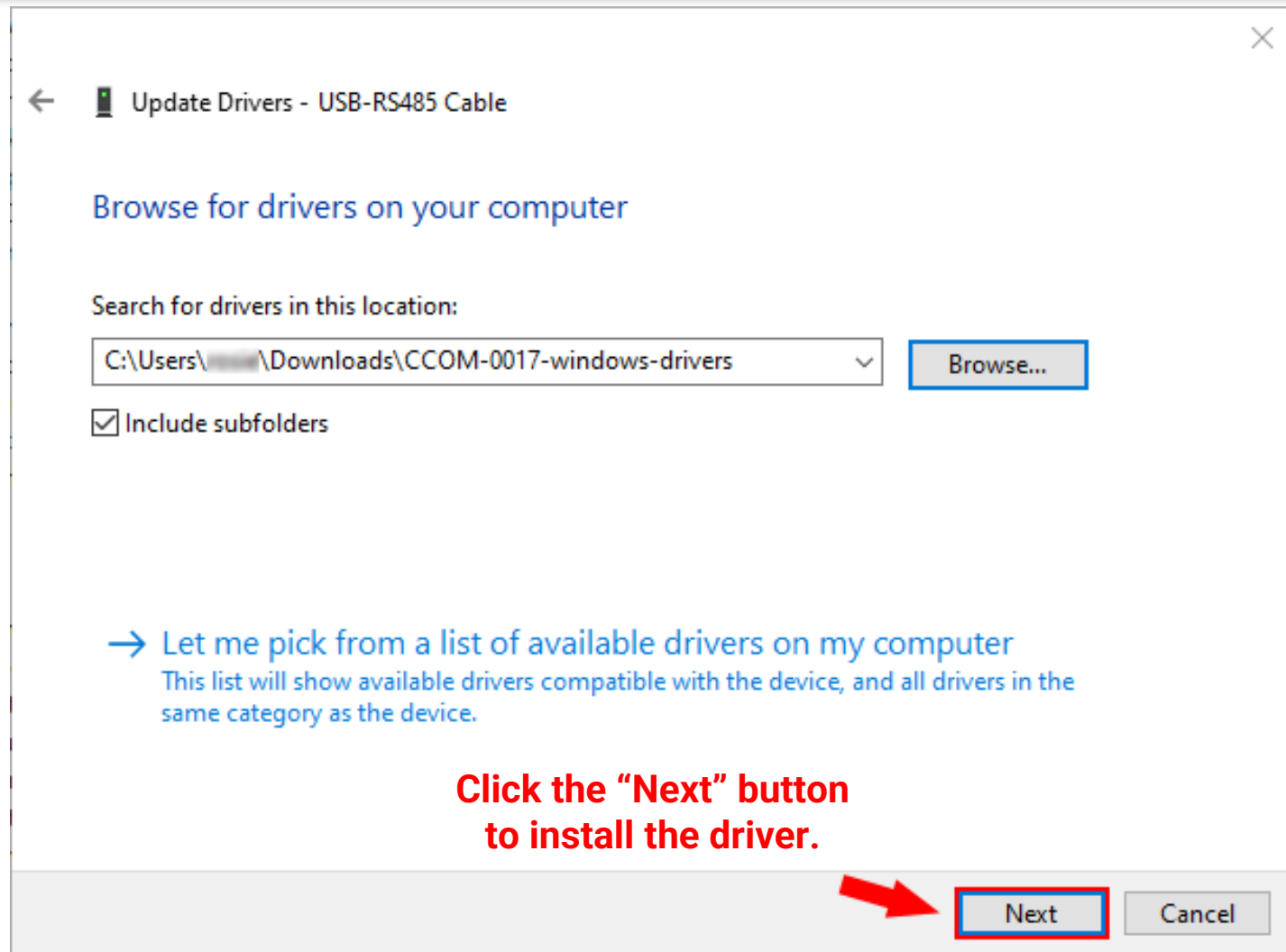
Finally select the "CCOM-0017-windows-drivers" folder by left clicking it.

Installing USB to RS-485 Drivers

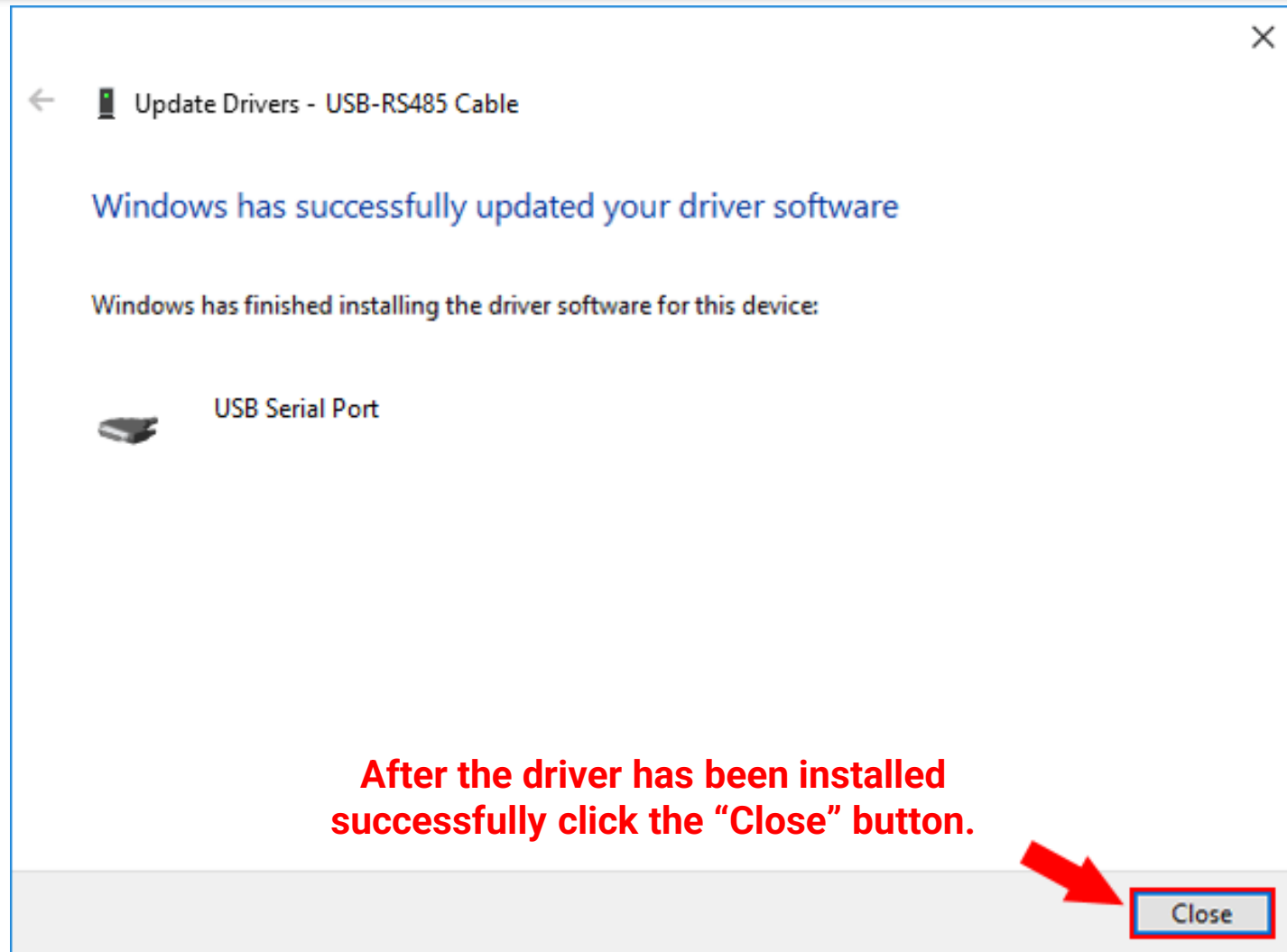


After selecting the "CCOM-0017-windows-drivers" folder click the "OK" button.

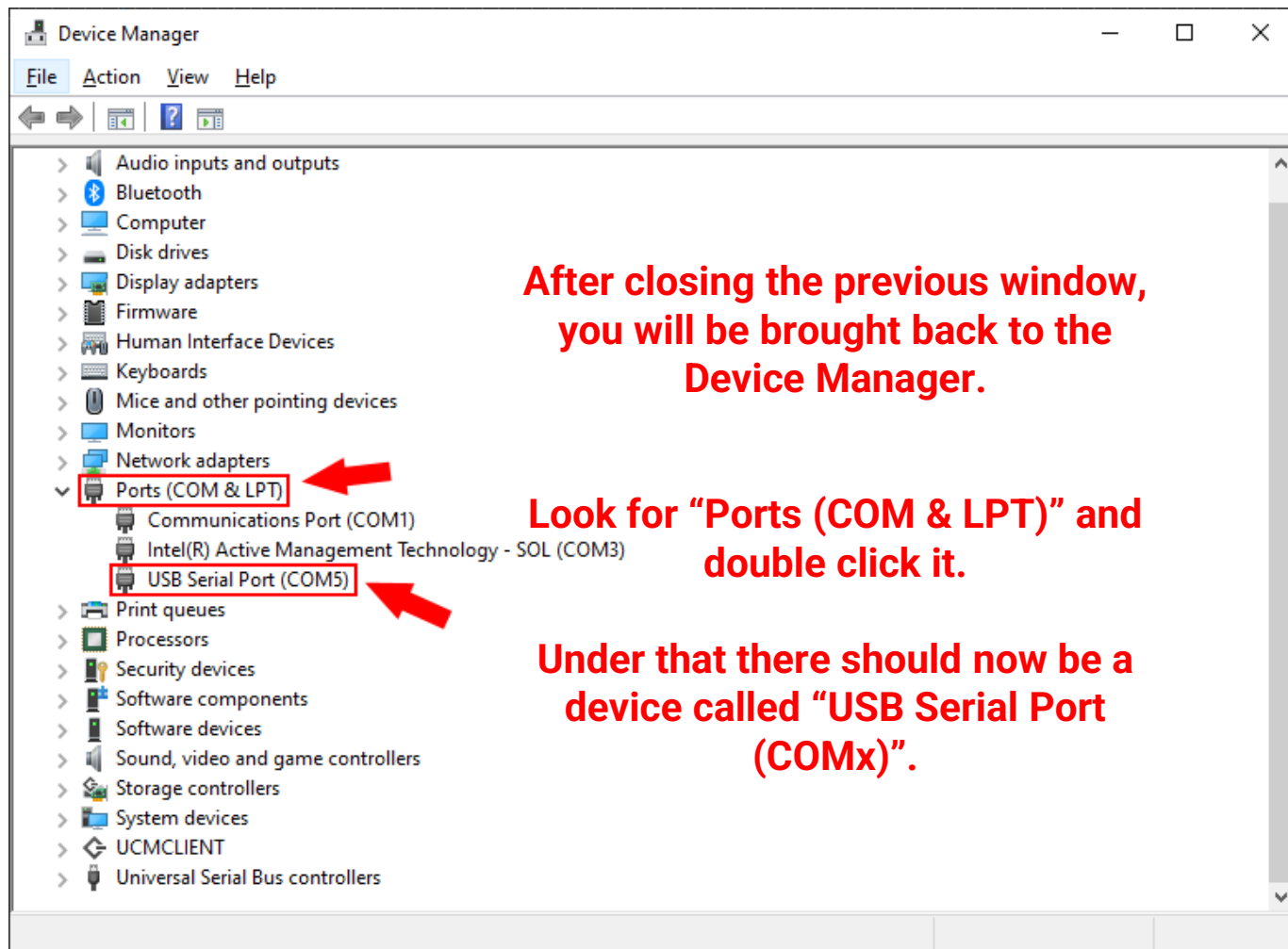
Installing USB to RS-485 Drivers



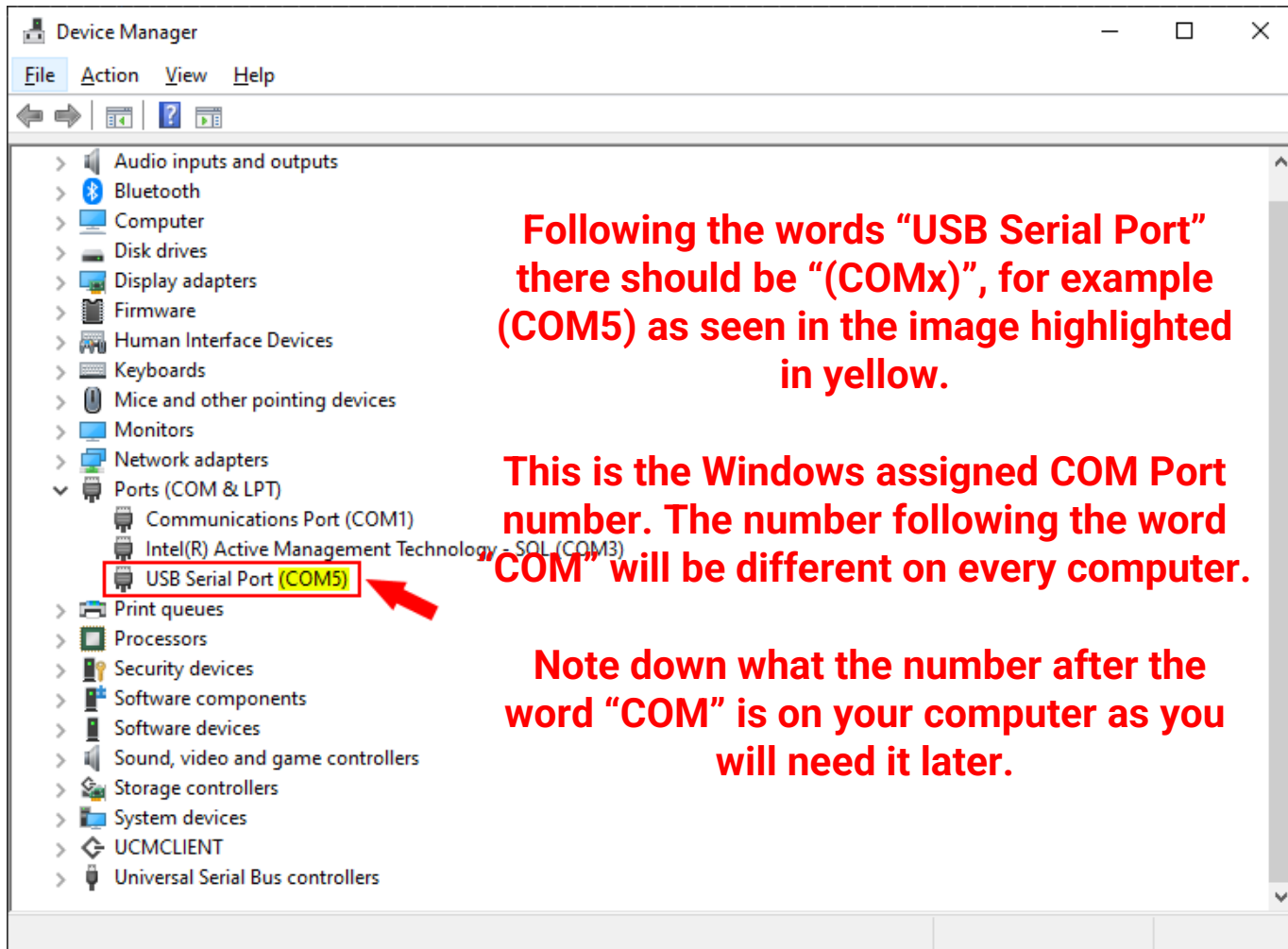
Installing USB to RS-485 Drivers



Ensuring the driver installed correctly



Seeing the COM Port Number

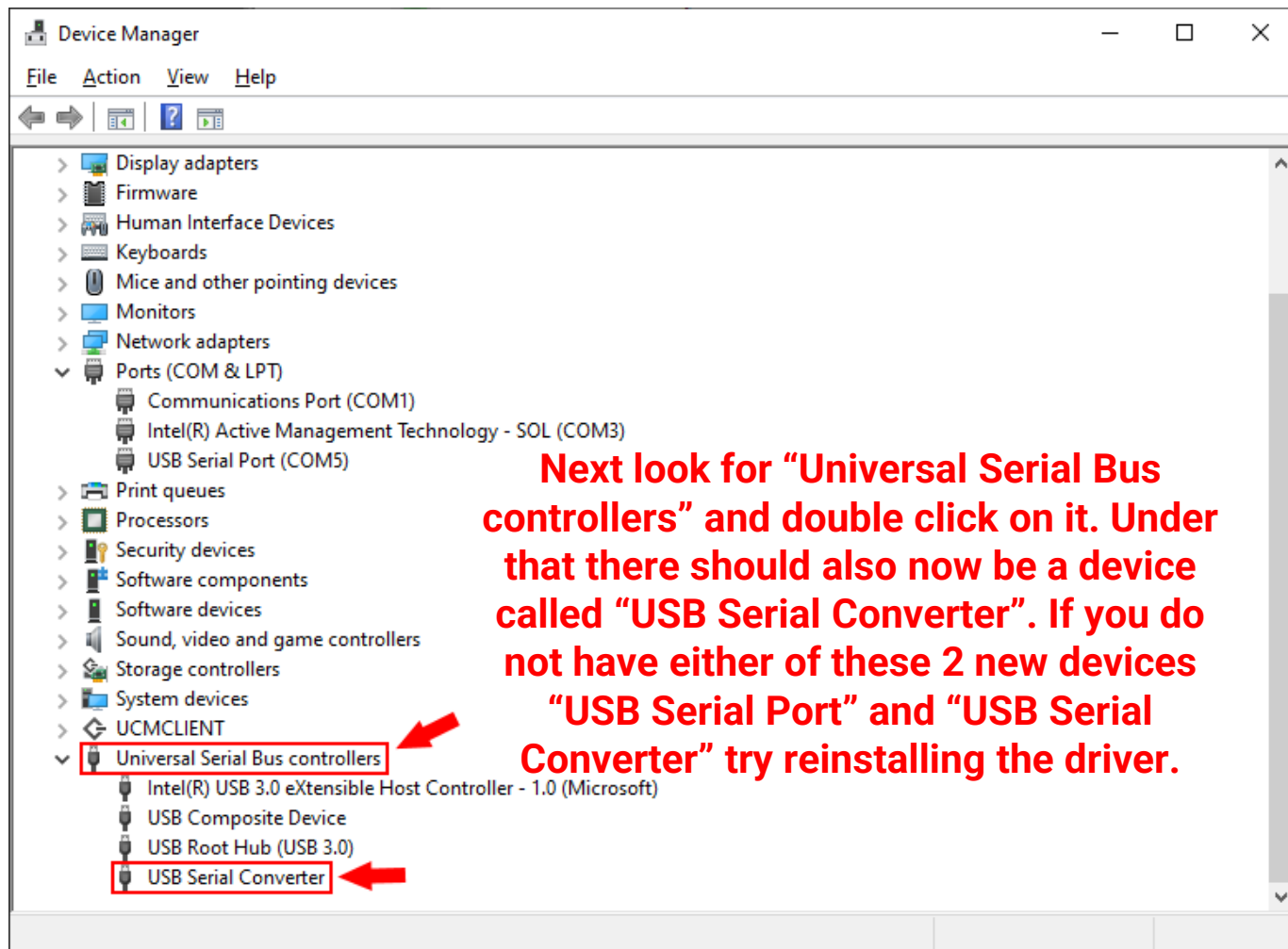


Following the words "USB Serial Port" there should be "(COMx)", for example (COM5) as seen in the image highlighted in yellow.

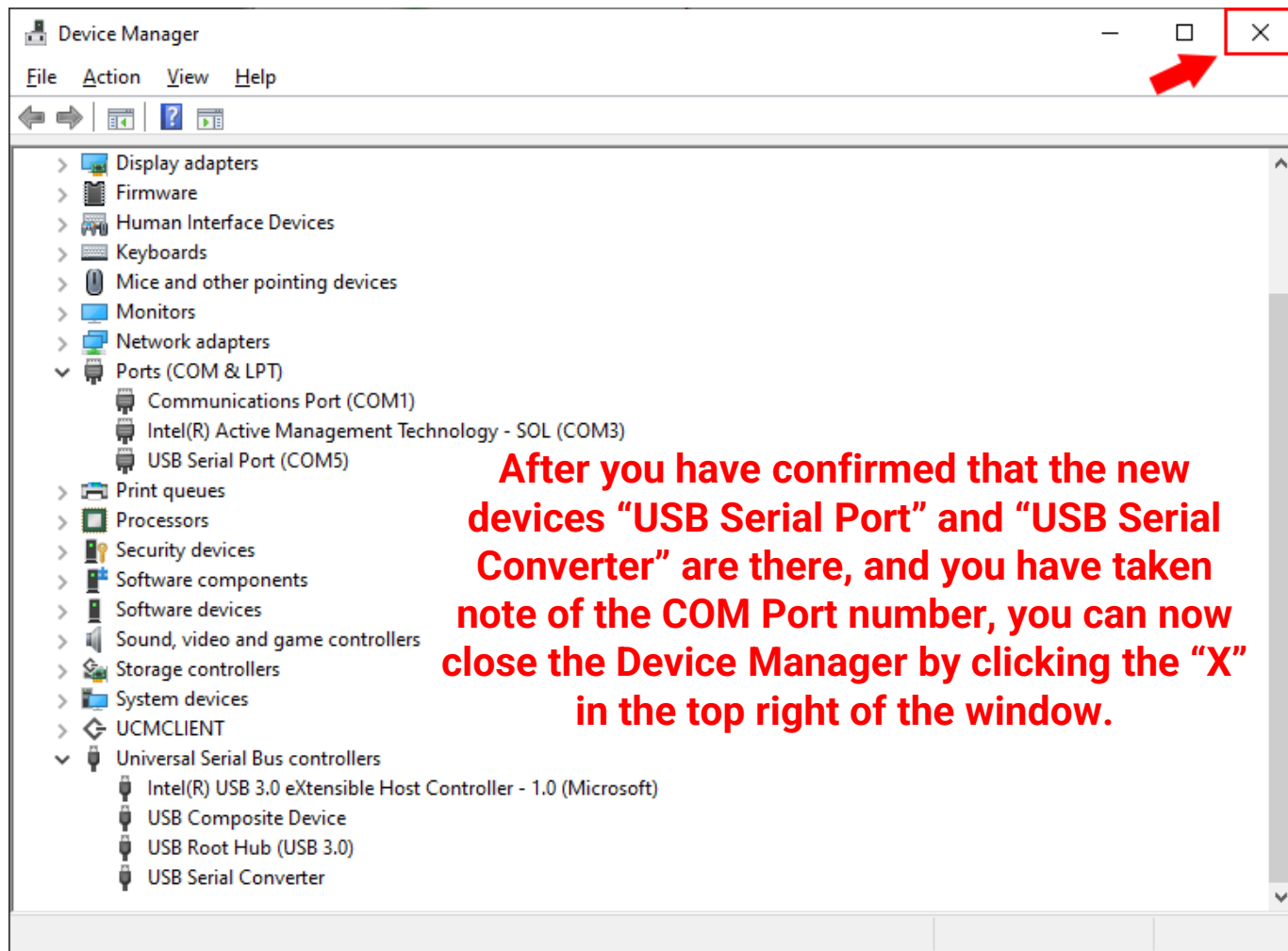
This is the Windows assigned COM Port number. The number following the word "COM" will be different on every computer.

Note down what the number after the word "COM" is on your computer as you will need it later.

Ensuring the driver installed correctly



Ensuring the driver installed correctly



Installing USB to RS-485 Drivers

You now have everything ready for DTS Config. To open DTS Config left click the Windows "Start" icon button in the bottom left of your screen. This will open the start menu.

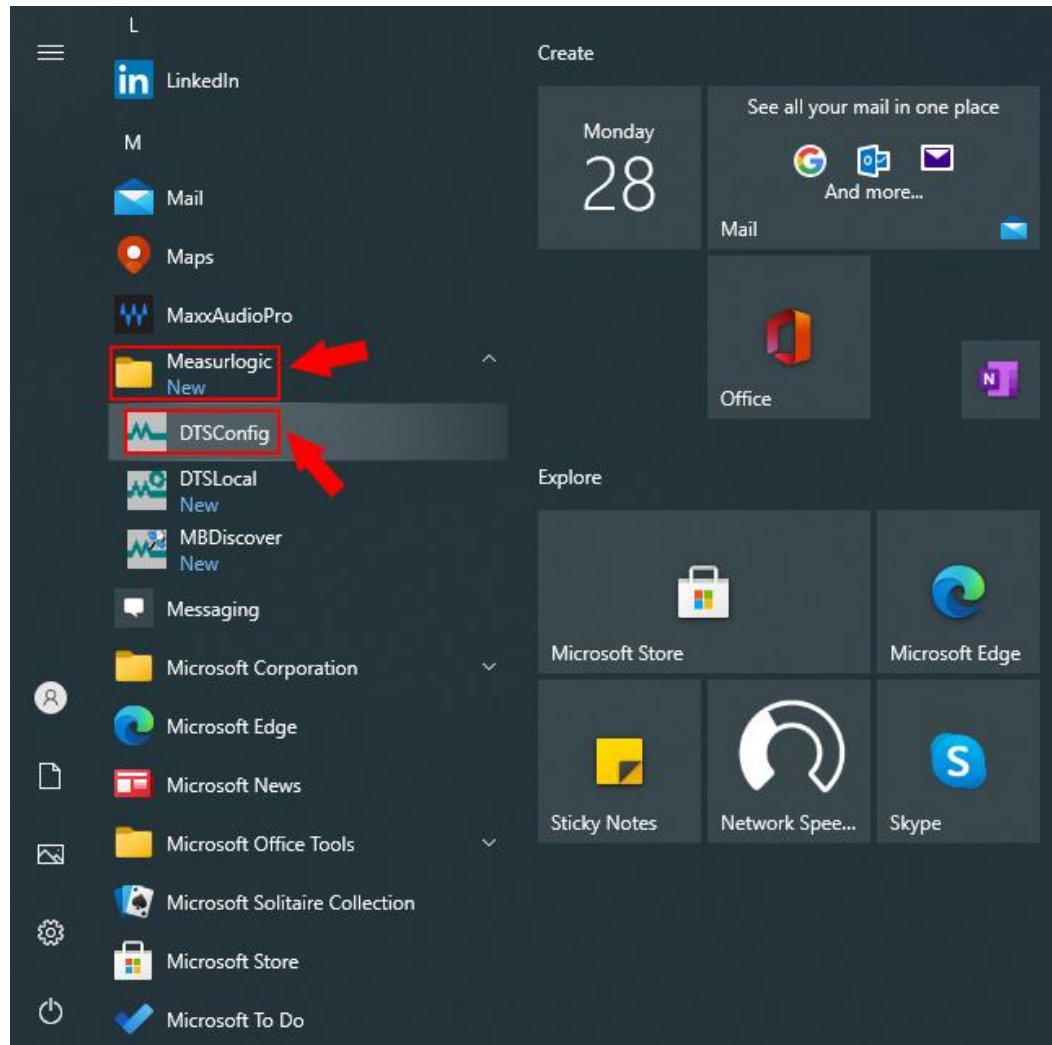


Type here to search

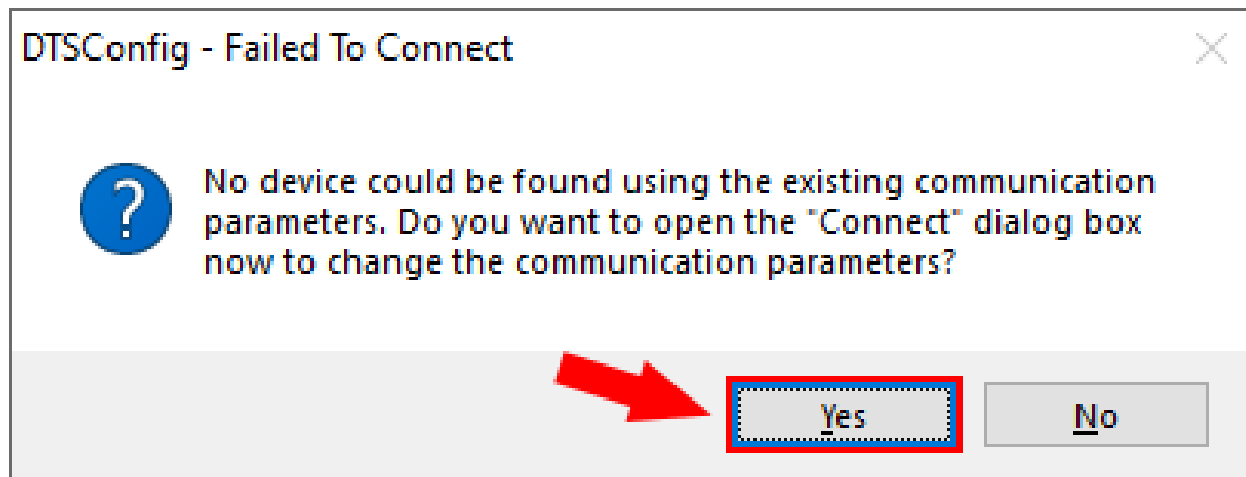


Starting DTS Config

On the left side of this menu where the list of apps is, scroll down until you find a folder called "Measurlogic" and click on it. In this folder will be 3 apps, click on the app called "DTS Config" to open DTS Config.



Connecting to the DTS Meter



After opening DTS Config the following window will open.
Click the "Yes" button.

RS-485 Serial Comms Parameters

Connection S... — □ ×

☒ Serial ☐ TCP ☐ RTU Over TCP

Port Select: COM5 ▼

Baud Rate: 9600 ▼

Data Bits: 8 ▼

Parity: Even ▼

Stop Bits: One ▼

Modbus Address: 100

Connect Cancel

A new window will open. In this window look for "Port Select:" and to the right of it click the little arrow to drop down a menu. In this menu look for the COM Port number you noted down earlier (e.g., COM5) and click it. Then click the "Connect" button at the bottom of the window.

Configuring the DTS Meter

DTS Config (V1.45.0.288)

File Monitor **Configure** Connect DTS Help

Instantaneous Minimum Maximum Demand/Energy Digital Inputs Identification

Values

	A	B	C	Tot/Avg	
Voltage L-N:	0.0	0.0	0.0	0.0	V
Voltage L-L:	0.0	0.0	0.0	0.0	V
Current:	0.000	0.000	0.000	0.000	A
Frequency:	0.00	0.00	0.00	0.00	Hertz
Active Power:	0.0	0.0	0.0	0.0	W
Apparent Power:	0.0	0.0	0.0	0.0	VA
Reactive Power:	0.0	0.0	0.0	0.0	VAR
Power Factor:	1.0000	1.0000	1.0000	1.0000	
Active Demand:				0.0	W
Neutral Current:				0.000	A

☐ View as Secondaries

Start Data Logging

A new window will open that looks like the following. This is the monitor page in DTS Config. We will start by changing the user configurations in the DTS Meter. Click the "Configure" button along the top of the window.

Communicating \\COM5:9600,e,8,1 #100 DTS 305 S/N: 0030000280 V3.0400

Setting the CT Rating

DTS Config (V1.45.0.288)

File Monitor Configure Connect DTS Help

User In / Out Time Display

Electrical Settings

CT Settings

CT Current: 600 Amps

☐ Correct Reversed CT Installation

Wiring Topology

3-Phase 3/4-Wire WYE (ABC&n)

☐ Auto Detect Topology

Apply Changes

Show Advanced Electrical Settings

Communications Settings

Address: 100

Baud Rate: 9600

Parity: Even

Stop Bits: One

☐ RS485 Terminator On

Apply Changes

User Map / Emulation

CVM-Mini

Apply Changes

Modbus Reporting

☒ Report on Modbus as Secondaries

Apply Changes

Communicating \\.\COM5:9600,e,8,1 #100 DTS 305 S/N: 0030000280 V3.0400

**In the top left of the window
the CT Rating can be set.
As an example, 600A was used.**

Setting Input/Output Mappings

DTS Config (V1.45.0.288)

File Monitor **Configure** Connect DTS Help

User **In / Out** Time Display

Electrical Settings

CT Settings

CT Current: 600 Amps

☐ Correct Reversed CT Installation

Wiring Topology

3-Phase 3/4-Wire WYE (ABC&n)

☐ Auto Detect Topology

Apply Changes

Show Advanced Electrical Settings

Communications Settings

Address: 100

Baud Rate: 9600

Parity: Even

Stop Bits: One

☐ RS485 Terminator On

Apply Changes

User Map / Emulation

CVM-Mini

Apply Changes

Modbus Reporting

☒ Report on Modbus as Secondaries

Apply Changes

Communicating \\.\COM5:9600,e,8,1 #100 DTS 305 S/N: 0030000280 V3.0400

Configuring the Input/Output mappings (model dependent)

Setting Input/Output Mappings

The meter model number shows the Input/Output capability

- Please see the meter datasheet for details.
- The most common I/O options are:
 - ❖ -P 1 x Digital Output
 - ❖ -A 1 x Digital Output and 2 x Digital Inputs
 - ❖ -3 3 x Digital Outputs
- Model Number Examples:
 - ❖ DTS 310-34-SM-**A**-4
 - ❖ DTS SMX-34-EB-**P**-N

Setting Input/Output Mappings

Please see the following document on our website

https://www.measurlogic.com/wp-content/uploads/2020/03/DTS-Config-Input-Output-Mapping_R21A.pdf

DATA SHEETS & DOWNLOADS

DESCRIPTION

FEATURES

SPECIFICATIONS

DATA SHEETS & DOWNLOADS

Brochures

DTS 310 Datasheet (1.1 Mb) [PDF]
MLG-WCT 333mV split core CT datasheet (1.4 Mb) [PDF]
MLG-RCT- Flexible Rogowski CT datasheet (385.5 Kb) [PDF]
Right Angle DIN Rail Bracket Datasheet (1.4 Mb) [PDF]
Inline Fuse Kit Sheet (1 Mb) [PDF]

Technical

DTS 310-xx-NN-P-x Pulse energy meter- Quick Start Guide (192.5 Kb) [PDF]
DTS 310 with Serial/Ethernet communications – Quick Start Guide (189.1 Kb) [PDF]
DTS 310 – Installation Guide (970.9 Kb) [PDF]
DTS 310 – LED Definitions (261.7 Kb) [PDF]
RS-485 Cabling Requirements for Modbus RTU and BACnet MSTP (161.3 Kb) [PDF]
Guide for Extending CT Cable Length (122 Kb) [PDF]
Using Multiple CT Sets with DTS Meters (681.6 Kb) [PDF]
Configuring Digital IO using DTS Config (621.5 Kb) [PDF]

Software

Download DTS Config (Modbus ONLY) (1.9 Mb) [ZIP]
Download DTS Toolbox (9.2 Mb) [ZIP]
Changing IP settings for an Ethernet based DTS meter (1.4 Mb) [PDF]
BACnet Explorers – 3rd party tools

Or you can link to it from any
DTS meter product page

Technical Support

Measurlogic Inc

www.measurlogic.com

support@measurlogic.com

Tel: 877-777-6567

Tel: 303-805-5252



www.measurlogic.com